



[Go to Product page](#)

Datasheet for ABIN571195
anti-ETFA antibody (C-Term)

1 Image

Overview

Quantity:	100 µg
Target:	ETFA
Binding Specificity:	C-Term
Reactivity:	Human, Mouse, Rat
Host:	Goat
Clonality:	Polyclonal
Conjugate:	This ETFA antibody is un-conjugated
Application:	Western Blotting (WB), ELISA

Product Details

Purpose:	ETFA
Immunogen:	C-QVADYGIVADLFK
Sequence:	QVADYGIVAD LFK
Isotype:	IgG
Specificity:	This antibody is expected to recognize both reported isoforms (NP_000117.1, NP_001121188.1).
Cross-Reactivity:	Cow, Dog, Human, Mouse, Rat
Purification:	Purified from goat serum by ammonium sulphate precipitation followed by antigen affinity chromatography using the immunizing peptide.
Grade:	Verified

Target Details

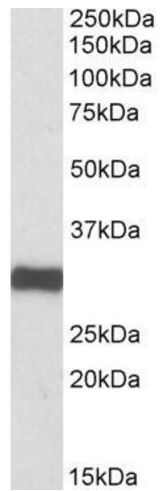
Target:	ETFA
Alternative Name:	ETFA (ETFA Products)
Background:	ETFA, electron-transfer-flavoprotein, alpha polypeptide, EMA, GA2, MADD, electron transfer flavoprotein alpha-subunit, electron transfer flavoprotein, alpha polypeptide, glutaric aciduria II
Gene ID:	2108, 110842, 300726
NCBI Accession:	NP_000117 , NP_001121188
Pathways:	SARS-CoV-2 Protein Interactome

Application Details

Application Notes:	Western Blot: Approx 30 kDa band observed in Human, Mouse and Rat Heart lysates (calculated MW of 30.0 kDa according to NP_001121188.1). Recommended concentration: 0.05-0.2 µg/mL. Peptide ELISA: antibody detection limit dilution 1:8000.
Restrictions:	For Research Use only

Handling

Format:	Liquid
Concentration:	0.5 mg/mL
Buffer:	Supplied at 0.5 mg/mL in Tris saline, 0.02 % sodium azide, pH 7.3 with 0.5 % bovine serum albumin.
Preservative:	Sodium azide
Precaution of Use:	This product contains Sodium azide: a POISONOUS AND HAZARDOUS SUBSTANCE which should be handled by trained staff only.
Handling Advice:	Minimize freezing and thawing.
Storage:	-20 °C
Storage Comment:	Aliquot and store at -20°C, with minimal freeze/thawing. A working aliquot may be refrigerated at 4°C for a few weeks and still remain viable.



Western Blotting

Image 1. ABIN571195 (0.1µg/ml) staining of Human Heart lysate (35µg protein in RIPA buffer). Primary incubation was 1 hour. Detected by chemiluminescence.