



[Go to Product page](#)

Datasheet for ABIN5711963

FBXL2 Protein (AA 1-423, full length) (His-SUMO Tag)

1 Image

Overview

Quantity:	100 µg
Target:	FBXL2
Protein Characteristics:	full length, AA 1-423
Origin:	Human
Source:	Escherichia coli (E. coli)
Protein Type:	Recombinant
Purification tag / Conjugate:	This FBXL2 protein is labelled with His-SUMO Tag.
Application:	SDS-PAGE (SDS)

Product Details

Sequence:	<p>MVFSNNDEGL INKKLPKELL LRIFSFLDIV TLCRCAQISK AWNILALDGS NWQRIDLFNF QTDVEGRVVE NISKRCGGFL RKLSLRGCIG VGDSSLKTFQ QNCRNIEHLN LNGCTKITDS TCYLSRFCS KLKHLDLTSC VSITNSSLKG ISEGCRNLEY LNLSWCDQIT KDGIEALVRG CRGLKALLLR GCTQLEDEAL KHIQNYCHEL VSLNLQSCSR ITDEGVVQIC RGCHRLQALC LSGCSNLTDALSLTALGLNCP RLQILEAARC SHLTDAGFTL LARNCHELEK MDLEECILIT DSTLIQLSIH CPKLQALSLS HCELITDDGI LHLSNSTCGH ERLRVLELDN CLLITDVALE HLENCRGLER LELYDCQQVT RAGIKRMRAQ LPHVKVHAYF APVTPPTAVA GSGQRLCRCC VIL</p>
Purification:	SDS-PAGE
Purity:	> 90 %

Target Details

Target:	FBXL2
Alternative Name:	FBXL2 (FBXL2 Products)
Molecular Weight:	63.03 kDa
UniProt:	Q9UKC9

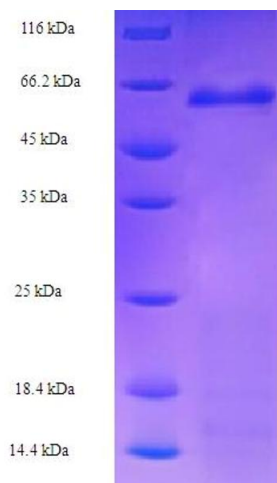
Application Details

Application Notes:	Optimal working dilution should be determined by the investigator.
Restrictions:	For Research Use only

Handling

Format:	Liquid
Concentration:	0.1-2 mg/mL
Buffer:	20 mM Tris-HCl based buffer, pH 8.0
Storage:	-80 °C, 4 °C, -20 °C
Storage Comment:	Store at -20°C, for extended storage, conserve at -20°C or -80°C. Repeated freezing and thawing is not recommended. Store working aliquots at 4°C for up to one week.

Images



SDS-PAGE

Image 1.