

Datasheet for ABIN5711985

PPP2R3B Protein (AA 1-176) (His-SUMO Tag)



[Go to Product page](#)

1 Image

Overview

Quantity:	100 µg
Target:	PPP2R3B
Protein Characteristics:	AA 1-176
Origin:	Human
Source:	Escherichia coli (E. coli)
Protein Type:	Recombinant
Purification tag / Conjugate:	This PPP2R3B protein is labelled with His-SUMO Tag.
Application:	SDS-PAGE (SDS)

Product Details

Sequence: MDLDGDGALS MFELEYFYEE QCRRLDSMAI EALPFQDCLC QMLDLVKPRT EGKITLQDLK
RCKLANVFFD TFFNIEKYLD HEQKEQISLL RDGDSGGPEL SDWEKYAAEE YDILVAEETA
GEPWEDGFEA ELSPVEQKLS ALRSPLAQRP FFEAPSPLGA VDLYEYACGD EDLEPL

Purification: SDS-PAGE

Purity: > 90 %

Target Details

Target: PPP2R3B

Alternative Name: P2R3B ([PPP2R3B Products](#))

Background: The B regulatory subunit might modulate substrate selectivity and catalytic activity, and also might direct the localization of the catalytic enzyme to a particular subcellular compartment.

Target Details

Molecular Weight:	36.1 kDa
UniProt:	Q9Y5P8
Pathways:	PI3K-Akt Signaling, Mitotic G1-G1/S Phases

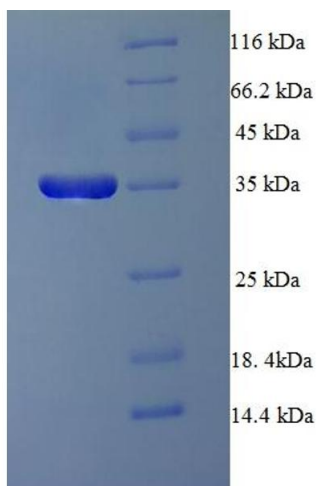
Application Details

Application Notes:	Optimal working dilution should be determined by the investigator.
Restrictions:	For Research Use only

Handling

Format:	Liquid
Concentration:	0.1-2 mg/mL
Buffer:	20 mM Tris-HCl based buffer, pH 8.0
Storage:	-80 °C,4 °C,-20 °C
Storage Comment:	Store at -20°C, for extended storage, conserve at -20°C or -80°C. Repeated freezing and thawing is not recommended. Store working aliquots at 4°C for up to one week.

Images



SDS-PAGE

Image 1.