

Datasheet for ABIN5711999

MAGMAS Protein (AA 1-125, full length) (GST tag)[Go to Product page](#)**1** Image

Overview

Quantity:	100 µg
Target:	MAGMAS (PAM16)
Protein Characteristics:	AA 1-125, full length
Origin:	Human
Source:	Escherichia coli (E. coli)
Protein Type:	Recombinant
Purification tag / Conjugate:	This MAGMAS protein is labelled with GST tag.
Application:	SDS-PAGE (SDS)

Product Details

Sequence:	MAKYLAQIIV MGVQVVGRAF ARALRQEFAA SRAAADARGR AGHRSAAASN LSGLSLQEAQ QILNVSKLSP EEVQKNYEHL FKVNDKSVGG SFYLQSKVVR AKERLDEELK IQAQEDREKG QMPHT
Purification:	SDS-PAGE
Purity:	> 90 %

Target Details

Target:	MAGMAS (PAM16)
Alternative Name:	TIM16 (PAM16 Products)
Background:	Regulates ATP-dependent protein translocation into the mitochondrial matrix. Inhibits DNAJC19 stimulation of HSPA9/Mortalin ATPase activity.

Target Details

Molecular Weight: 41.2 kDa

UniProt: [Q9Y3D7](#)

Application Details

Application Notes: Optimal working dilution should be determined by the investigator.

Restrictions: For Research Use only

Handling

Format: Liquid

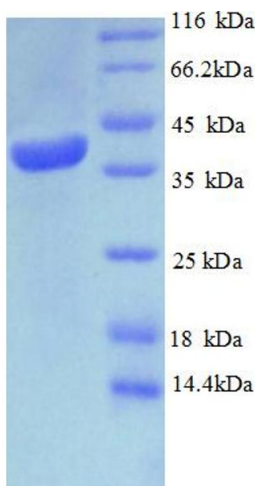
Concentration: 0.1-2 mg/mL

Buffer: 20 mM Tris-HCl based buffer, pH 8.0

Storage: -80 °C, 4 °C, -20 °C

Storage Comment: Store at -20°C, for extended storage, conserve at -20°C or -80°C. Repeated freezing and thawing is not recommended. Store working aliquots at 4°C for up to one week.

Images



SDS-PAGE

Image 1.