



[Go to Product page](#)

Datasheet for ABIN571205

## anti-GRM2 antibody (Internal Region)

### 2 Images

#### Overview

Quantity:	100 µg
Target:	GRM2
Binding Specificity:	Internal Region
Reactivity:	Human
Host:	Goat
Clonality:	Polyclonal
Conjugate:	This GRM2 antibody is un-conjugated
Application:	ELISA, Western Blotting (WB), Immunohistochemistry (IHC)

#### Product Details

Purpose:	GRM2
Immunogen:	C-KETAPERREV
Sequence:	KETAPERREV
Isotype:	IgG
Specificity:	This antibody is expected to recognize both isoforms (NP_000830.2, NP_001123535.1).
Cross-Reactivity:	Cow, Dog, Human, Mouse, Rat
Purification:	Purified from goat serum by ammonium sulphate precipitation followed by antigen affinity chromatography using the immunizing peptide.
Grade:	Verified

## Target Details

---

Target:	GRM2
Alternative Name:	GRM2 ( <a href="#">GRM2 Products</a> )
Background:	GRM2, glutamate receptor, metabotropic 2, GLUR2, GPRC1B, MGLUR2, mGlu2, glutamate metabotropic receptor 2, glutamate receptor homolog
Gene ID:	2912, 108068, 24415
NCBI Accession:	<a href="#">NP_000830</a> , <a href="#">NP_001123535</a>
Pathways:	<a href="#">cAMP Metabolic Process</a> , <a href="#">Dicarboxylic Acid Transport</a>

## Application Details

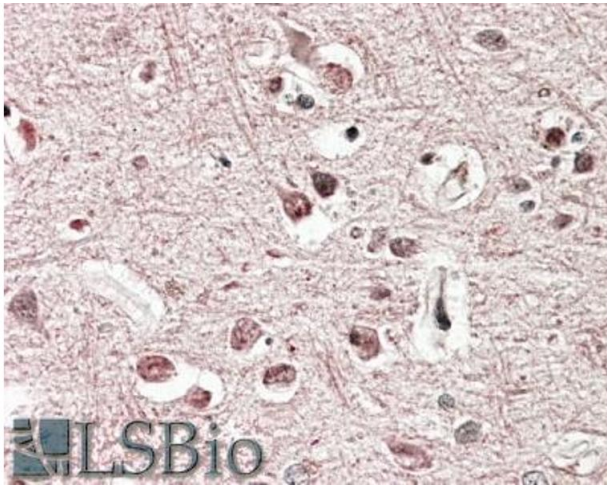
---

Application Notes:	Immunohistochemistry: In paraffin embedded Human Cerebral Cortex shows membranous/axonal staining. Recommended concentration, 3-5 µg/mL. Western Blot: Approx 30 kDa band observed in Human Brain (Hippocampus) lysates (calculated MW of 27.5 kDa according to NP_001123535.1). Recommended concentration: 1-3 µg/mL. Peptide ELISA: antibody detection limit dilution 1:16000.
Restrictions:	For Research Use only

## Handling

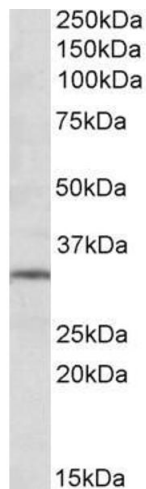
---

Format:	Liquid
Concentration:	0.5 mg/mL
Buffer:	Supplied at 0.5 mg/mL in Tris saline, 0.02 % sodium azide, pH 7.3 with 0.5 % bovine serum albumin.
Preservative:	Sodium azide
Precaution of Use:	This product contains Sodium azide: a POISONOUS AND HAZARDOUS SUBSTANCE which should be handled by trained staff only.
Handling Advice:	Minimize freezing and thawing.
Storage:	-20 °C
Storage Comment:	Aliquot and store at -20°C, with minimal freeze/thawing. A working aliquot may be refrigerated at 4°C for a few weeks and still remain viable.



### Immunohistochemistry

**Image 1.** ABIN571205 (3.8µg/ml) staining of paraffin embedded Human Cerebral Cortex. Steamed antigen retrieval with citrate buffer pH 6, AP-staining.



### Western Blotting

**Image 2.** ABIN571205 (1µg/ml) staining of Human Hippocampus lysate (35µg protein in RIPA buffer). Primary incubation was 1 hour. Detected by chemiluminescence.