



[Go to Product page](#)

Datasheet for ABIN571208

anti-Phospholamban antibody (N-Term)

2 Images

Overview

Quantity:	100 µg
Target:	Phospholamban (PLN)
Binding Specificity:	N-Term
Reactivity:	Human, Rat
Host:	Goat
Clonality:	Polyclonal
Conjugate:	This Phospholamban antibody is un-conjugated
Application:	ELISA, Western Blotting (WB), Immunohistochemistry (IHC)

Product Details

Purpose:	Phospholamban / PLN
Immunogen:	KVQYLTRSAIRR-C
Sequence:	KVQYLTRSAI RR
Isotype:	IgG
Cross-Reactivity:	Cow, Human, Pig, Rat
Purification:	Purified from goat serum by ammonium sulphate precipitation followed by antigen affinity chromatography using the immunizing peptide.
Grade:	Verified

Target Details

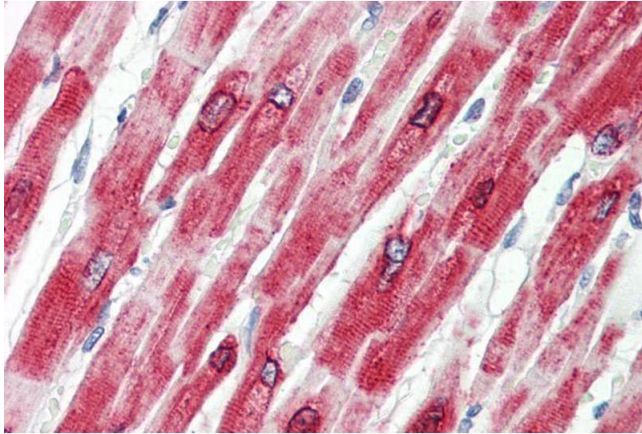
Target:	Phospholamban (PLN)
Alternative Name:	PLN (PLN Products)
Background:	PLN, phospholamban, CMD1P, PLB, cardiac phospholamban
Gene ID:	5350, 64672
NCBI Accession:	NP_002658
Pathways:	Negative Regulation of Transporter Activity

Application Details

Application Notes:	<p>Immunohistochemistry: Paraffin embedded Human Heart. Recommended concentration: 3.75 µg/mL.</p> <p>Western Blot: Approx 13 kDa band observed in Human and Rat Heart lysates (calculated MW of 6.11 kDa according to NP_002658.1). Recommended concentration: 0.01-0.03 µg/mL. Primary incubation was 1 hour.</p> <p>Peptide ELISA: antibody detection limit dilution 1:8000.</p>
Restrictions:	For Research Use only

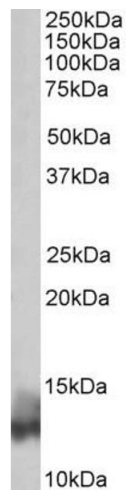
Handling

Format:	Liquid
Concentration:	0.5 mg/mL
Buffer:	Supplied at 0.5 mg/mL in Tris saline, 0.02 % sodium azide, pH 7.3 with 0.5 % bovine serum albumin.
Preservative:	Sodium azide
Precaution of Use:	This product contains Sodium azide: a POISONOUS AND HAZARDOUS SUBSTANCE which should be handled by trained staff only.
Handling Advice:	Minimize freezing and thawing.
Storage:	-20 °C
Storage Comment:	Aliquot and store at -20°C, with minimal freeze/thawing. A working aliquot may be refrigerated at 4°C for a few weeks and still remain viable.



Immunohistochemistry

Image 1. ABIN571208 (3.75µg/ml) staining of paraffin embedded Human Heart. Steamed antigen retrieval with citrate buffer pH 6, AP-staining.



Western Blotting

Image 2. ABIN571208 (0.03µg/ml) staining of Human Heart lysate (35µg protein in RIPA buffer). Detected by chemiluminescence.