

Datasheet for ABIN571213

**anti-SNAP23 antibody (Internal Region)****2** Images[Go to Product page](#)

## Overview

Quantity:	100 µg
Target:	SNAP23
Binding Specificity:	Internal Region
Reactivity:	Human
Host:	Goat
Clonality:	Polyclonal
Conjugate:	This SNAP23 antibody is un-conjugated
Application:	Western Blotting (WB), ELISA, Immunohistochemistry (IHC)

## Product Details

Purpose:	SNAP23
Immunogen:	C-QIKRITDKAD
Sequence:	QIKRITDKAD
Isotype:	IgG
Specificity:	This antibody is expected to recognize both reported isoforms (NP_003816.2, NP_570710.1).
Cross-Reactivity:	Cow, Human, Mouse, Rat
Purification:	Purified from goat serum by ammonium sulphate precipitation followed by antigen affinity chromatography using the immunizing peptide.
Grade:	Verified

## Target Details

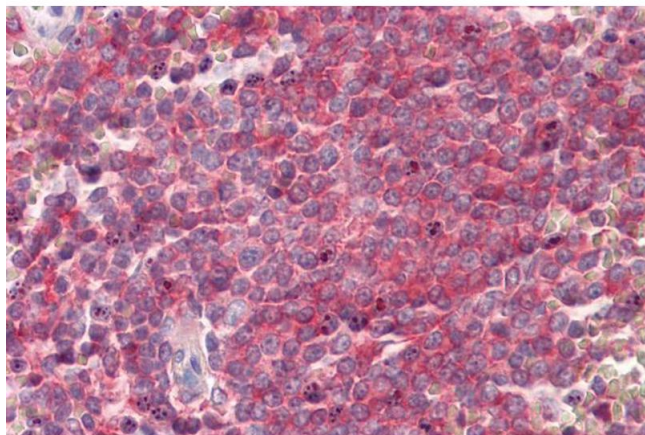
Target:	SNAP23
Alternative Name:	SNAP23 ( <a href="#">SNAP23 Products</a> )
Background:	SNAP23, synaptosomal-associated protein, 23 kDa, HsT17016, SNAP23A, SNAP23B, OTTHUMP00000161263, synaptosomal-associated protein 23
Gene ID:	8773, 20619, 64630
NCBI Accession:	<a href="#">NP_003816</a> , <a href="#">NP_570710</a>

## Application Details

Application Notes:	Immunohistochemistry: Paraffin embedded Spleen. Recommended concentration: 3.75 µg/mL. Western Blot: Approx 26 kDa band observed in Human Placenta lysates (calculated MW of 23.4 kDa according to NP_003816.2). This molecular weight is routinely observed by other sources. Recommended concentration: 0.1-0.3 µg/mL. Primary incubation was 1 hour. Peptide ELISA: antibody detection limit dilution 1:8000.
Restrictions:	For Research Use only

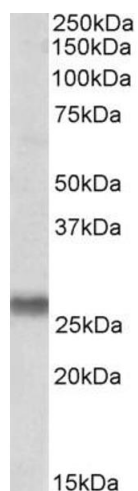
## Handling

Format:	Liquid
Concentration:	0.5 mg/mL
Buffer:	Supplied at 0.5 mg/mL in Tris saline, 0.02 % sodium azide, pH 7.3 with 0.5 % bovine serum albumin.
Preservative:	Sodium azide
Precaution of Use:	This product contains Sodium azide: a POISONOUS AND HAZARDOUS SUBSTANCE which should be handled by trained staff only.
Handling Advice:	Minimize freezing and thawing.
Storage:	-20 °C
Storage Comment:	Aliquot and store at -20°C, with minimal freeze/thawing. A working aliquot may be refrigerated at 4°C for a few weeks and still remain viable.



#### Immunohistochemistry

**Image 1.** ABIN571213 (3.75µg/ml) staining of paraffin embedded Human Spleen. Steamed antigen retrieval with citrate buffer pH 6, AP-staining.



#### Western Blotting

**Image 2.** ABIN571213 (0.1µg/ml) staining of Human Placenta lysate (35µg protein in RIPA buffer). Detected by chemiluminescence.