

Datasheet for ABIN571218

anti-Ephrin B2 antibody (Internal Region)



[Go to Product page](#)

1 Image

Overview

Quantity:	100 µg
Target:	Ephrin B2 (EFNB2)
Binding Specificity:	Internal Region
Reactivity:	Human, Mouse, Rat
Host:	Goat
Clonality:	Polyclonal
Conjugate:	This Ephrin B2 antibody is un-conjugated
Application:	Western Blotting (WB), ELISA

Product Details

Purpose:	EFNB2
Immunogen:	CPKVDSKTVGQYE
Sequence:	CPKVDSKTVG QYE
Isotype:	IgG
Cross-Reactivity:	Cow, Dog, Human, Mouse, Pig, Rat
Purification:	Purified from goat serum by ammonium sulphate precipitation followed by antigen affinity chromatography using the immunizing peptide.
Grade:	Verified

Target Details

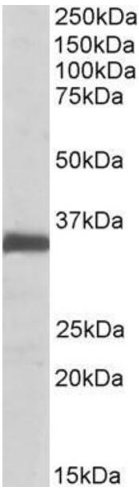
Target:	Ephrin B2 (EFNB2)
Alternative Name:	EFNB2 (EFNB2 Products)
Background:	EFNB2, ephrin-B2, EPLG5, HTKL, Htk-L, LERK5, MGC126226, MGC126227, MGC126228, HTK ligand, eph-related receptor tyrosine kinase ligand 5, ephrin B2, ligand of eph-related kinase 5
Gene ID:	1948, 13642, 306636
NCBI Accession:	NP_004084
Pathways:	RTK Signaling, Regulation of Muscle Cell Differentiation

Application Details

Application Notes:	Western Blot: Approx 35 kDa band observed in Human, Mouse and Rat Lung lysates (calculated MW of 36.9 kDa according to NP_004084.1). Recommended concentration: 0.1-0.3 µg/mL. Peptide ELISA: antibody detection limit dilution 1:16000.
Restrictions:	For Research Use only

Handling

Format:	Liquid
Concentration:	0.5 mg/mL
Buffer:	Supplied at 0.5 mg/mL in Tris saline, 0.02 % sodium azide, pH 7.3 with 0.5 % bovine serum albumin.
Preservative:	Sodium azide
Precaution of Use:	This product contains Sodium azide: a POISONOUS AND HAZARDOUS SUBSTANCE which should be handled by trained staff only.
Handling Advice:	Minimize freezing and thawing.
Storage:	-20 °C
Storage Comment:	Aliquot and store at -20°C, with minimal freeze/thawing. A working aliquot may be refrigerated at 4°C for a few weeks and still remain viable.



Western Blotting

Image 1. ABIN571218 (0.1µg/ml) staining of Rat Lung lysate (35µg protein in RIPA buffer). Primary incubation was 1 hour. Detected by chemiluminescence.