

Datasheet for ABIN5712189

Lectin, Galactose Binding, Soluble 5 (LGALS5) (AA 2-187), (partial) protein (GST tag)



[Go to Product page](#)

1 Image

Overview

| | |
|-------------------------------|---|
| Quantity: | 100 µg |
| Target: | Lectin, Galactose Binding, Soluble 5 (LGALS5) |
| Protein Characteristics: | AA 2-187, partial |
| Origin: | Human |
| Source: | Escherichia coli (E. coli) |
| Protein Type: | Recombinant |
| Purification tag / Conjugate: | GST tag |
| Application: | SDS-PAGE (SDS) |

Product Details

| | |
|---------------|---|
| Sequence: | VDIRHNKDRK VRRKEPKSQD IYLRLLVKLY RFLARRTNST FNQVVLKRLF MSRTNRPPLS LSRMIRKMKL PGRENKTAVV VGTITDDVRV QEVPKLVCA LRVTSRARSR ILRAGGKILT FDQLALDSPK GCGTVLLSGP RKGREVVYRHF GKAPGTPHSH TKPYVRSKGR KFERARGRRA SRGYKN |
| Purification: | SDS-PAGE |
| Purity: | > 90 % |

Target Details

| | |
|-------------------|---|
| Target: | Lectin, Galactose Binding, Soluble 5 (LGALS5) |
| Alternative Name: | RL18 (LGALS5 Products) |
| Molecular Weight: | 48.8 kDa |

Target Details

UniProt: [Q07020](#)

Application Details

Application Notes: Optimal working dilution should be determined by the investigator.

Restrictions: For Research Use only

Handling

Format: Liquid

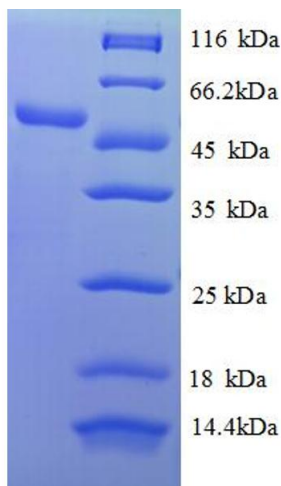
Concentration: 0.1-2 mg/mL

Buffer: 20 mM Tris-HCl based buffer, pH 8.0

Storage: -80 °C, 4 °C, -20 °C

Storage Comment: Store at -20°C, for extended storage, conserve at -20°C or -80°C. Repeated freezing and thawing is not recommended. Store working aliquots at 4°C for up to one week.

Images



SDS-PAGE

Image 1.