



Datasheet for ABIN571224

## anti-PRKAA2 antibody (Internal Region)



[Go to Product page](#)

### 3 Images

#### Overview

Quantity:	100 µg
Target:	PRKAA2
Binding Specificity:	Internal Region
Reactivity:	Human, Mouse, Rat
Host:	Goat
Clonality:	Polyclonal
Conjugate:	This PRKAA2 antibody is un-conjugated
Application:	Western Blotting (WB), ELISA

#### Product Details

Purpose:	PRKAA2
Immunogen:	Peptide with sequence CPLDALNTTKP, from the internal region of the protein sequence according to NP_006243.2.
Sequence:	CPLDALNTTK P
Isotype:	IgG
Cross-Reactivity:	Cow, Dog, Human, Mouse, Pig, Rat
Purification:	Purified from goat serum by ammonium sulphate precipitation followed by antigen affinity chromatography using the immunizing peptide.
Grade:	Verified

## Target Details

---

Target:	PRKAA2
Alternative Name:	PRKAA2 ( <a href="#">PRKAA2 Products</a> )
Background:	PRKAA2, protein kinase, AMP-activated, alpha 2 catalytic subunit, AMPK, AMPK2, PRKAA, 5'-AMP-activated protein kinase, catalytic alpha-2 chain, AMP-activated protein kinase alpha 2 catalytic subunit, AMPK-alpha-2 chain
Gene ID:	5563, 108079, 78975
NCBI Accession:	<a href="#">NP_006243</a>
Pathways:	<a href="#">AMPK Signaling</a> , <a href="#">Carbohydrate Homeostasis</a> , <a href="#">Chromatin Binding</a> , <a href="#">Regulation of Carbohydrate Metabolic Process</a> , <a href="#">Warburg Effect</a>

## Application Details

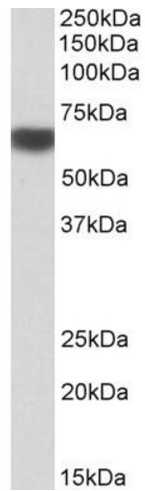
---

Application Notes:	Western Blot: Approx 65 kDa band observed in Human Heart and Liver lysates and in Mouse and Rat Heart lysates (calculated MW of 62.3 kDa according to NP_006243.2). Recommended concentration: 0.3-1 µg/mL. Primary incubation was 1 hour. Peptide ELISA: antibody detection limit dilution 1:16000.
Restrictions:	For Research Use only

## Handling

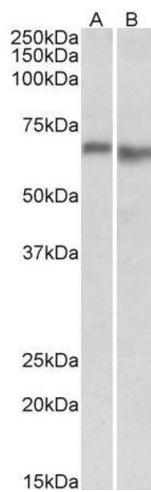
---

Format:	Liquid
Concentration:	0.5 mg/mL
Buffer:	Supplied at 0.5 mg/mL in Tris saline, 0.02 % sodium azide, pH 7.3 with 0.5 % bovine serum albumin.
Preservative:	Sodium azide
Precaution of Use:	This product contains Sodium azide: a POISONOUS AND HAZARDOUS SUBSTANCE which should be handled by trained staff only.
Handling Advice:	Minimize freezing and thawing.
Storage:	-20 °C
Storage Comment:	Aliquot and store at -20°C, with minimal freeze/thawing. A working aliquot may be refrigerated at 4°C for a few weeks and still remain viable.



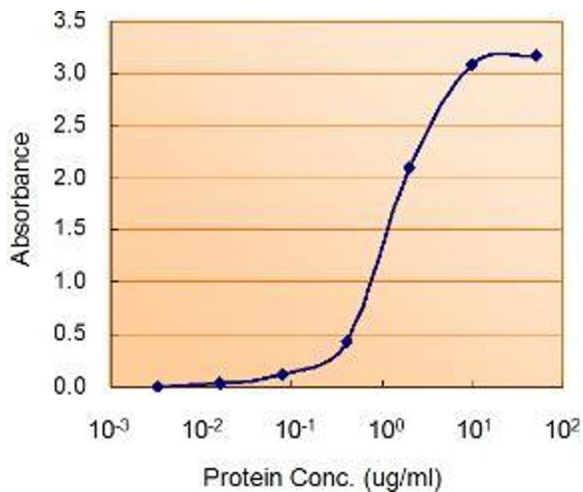
### Western Blotting

**Image 1.** (ABIN571224) (1 µg/mL) staining of Human Liver lysate (35 µg protein in RIPA buffer). Detected by chemiluminescence.



### Western Blotting

**Image 2.** ABIN571224 (0.3µg/ml) staining of Mouse (A) and Rat (B) Heart lysate (35µg protein in RIPA buffer). Detected by chemiluminescence.



### Enzyme Immunoassay

**Image 3.** ABIN571224 (1.5ug/ml) as the reporter with as the capture rabbit antibody (2.5ug/ml).