

Datasheet for ABIN571226
anti-PSMA4 antibody (Internal Region)[Go to Product page](#)

2 Images

Overview

Quantity:	100 µg
Target:	PSMA4
Binding Specificity:	Internal Region
Reactivity:	Human, Mouse, Rat
Host:	Goat
Clonality:	Polyclonal
Conjugate:	This PSMA4 antibody is un-conjugated
Application:	Western Blotting (WB), ELISA

Product Details

Purpose:	PSMA4
Immunogen:	C-SDANVLTNELR
Sequence:	SDANVLTNEL R
Isotype:	IgG
Specificity:	This antibody is expected to recognize both reported isoforms (NP_002780.1, NP_001096138.1). Reported variants represent identical protein: NP_002780.1, NP_001096137.1
Cross-Reactivity:	Dog, Human, Mouse, Rat
Purification:	Purified from goat serum by ammonium sulphate precipitation followed by antigen affinity chromatography using the immunizing peptide.

Product Details

Grade: Verified

Target Details

Target: PSMA4

Alternative Name: PSMA4 ([PSMA4 Products](#))

Background: PSMA4, proteasome (prosome, macropain) subunit, alpha type, 4, HC9, HsT17706, MGC111191, MGC12467, MGC24813, PSC9, macropain subunit C9, multicatalytic endopeptidase complex subunit C9, proteasome alpha 4 subunit, proteasome component C9, proteasome subun

Gene ID: 5685, 26441, 29671

NCBI Accession: [NP_002780](#), [NP_001096138](#)

Pathways: [Mitotic G1-G1/S Phases](#), [DNA Replication](#), [Synthesis of DNA](#)

Application Details

Application Notes: Western Blot: Approx 28 kDa band observed in lysates of cell lines K562, NIH3T3 and in lysates of Human Tonsil, Human Peripheral Blood Mononucleocytes and in Mouse and Rat Spleen (calculated MW of 29.5 kDa according to NP_002780.1). Recommended concentrati
Peptide ELISA: antibody detection limit dilution 1:4000.

Restrictions: For Research Use only

Handling

Format: Liquid

Concentration: 0.5 mg/mL

Buffer: Supplied at 0.5 mg/mL in Tris saline, 0.02 % sodium azide, pH 7.3 with 0.5 % bovine serum albumin.

Preservative: Sodium azide

Precaution of Use: This product contains Sodium azide: a POISONOUS AND HAZARDOUS SUBSTANCE which should be handled by trained staff only.

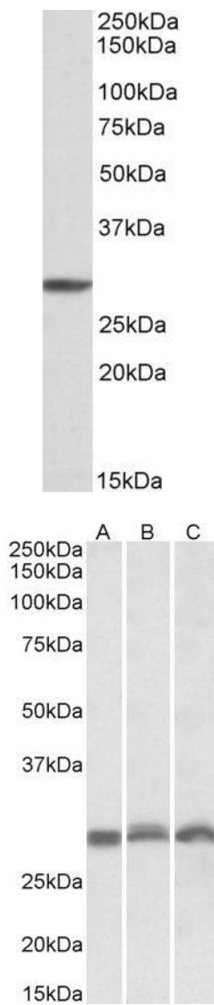
Handling Advice: Minimize freezing and thawing.

Storage: -20 °C

Handling

Storage Comment: Aliquot and store at -20°C, with minimal freeze/thawing. A working aliquot may be refrigerated at 4°C for a few weeks and still remain viable.

Images



Western Blotting

Image 1. ABIN571226 (1µg/ml) staining of K562 cell lysate (35µg protein in RIPA buffer). Primary incubation was 1 hour. Detected by chemiluminescence.

Western Blotting

Image 2. ABIN571226 (0.3µg/ml) staining of NIH3T3 (A), Mouse Spleen (B), Rat Spleen (C) lysates (35µg protein in RIPA buffer). Primary incubation was 1 hour. Detected by chemiluminescence.