

Datasheet for ABIN571231
anti-PSMB3 antibody (Internal Region)[Go to Product page](#)

2 Images

Overview

Quantity:	100 µg
Target:	PSMB3
Binding Specificity:	Internal Region
Reactivity:	Human
Host:	Goat
Clonality:	Polyclonal
Conjugate:	This PSMB3 antibody is un-conjugated
Application:	Western Blotting (WB), ELISA, Immunohistochemistry (IHC)

Product Details

Purpose:	PSMB3
Immunogen:	C-NLYELKEGRQ
Sequence:	NLYELKEGRQ
Isotype:	IgG
Cross-Reactivity:	Cow, Dog, Human, Mouse, Pig, Rat
Purification:	Purified from goat serum by ammonium sulphate precipitation followed by antigen affinity chromatography using the immunizing peptide.
Grade:	Verified

Target Details

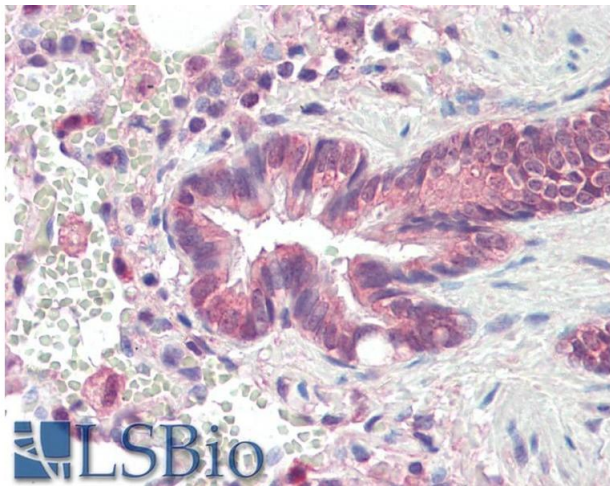
Target:	PSMB3
Alternative Name:	PSMB3 (PSMB3 Products)
Background:	PSMB3, proteasome (prosome, macropain) subunit, beta type, 3, HC10-II, MGC4147, proteasome beta 3 subunit, proteasome chain 13, proteasome component C10-II, proteasome theta chain
Gene ID:	5691, 26446, 29676
NCBI Accession:	NP_002786
Pathways:	Mitotic G1-G1/S Phases , DNA Replication , Synthesis of DNA , Cell RedoxHomeostasis , Lipid Metabolism

Application Details

Application Notes:	Immunohistochemistry: Paraffin embedded Human Lung. Recommended concentration: 10 µg/mL. Western Blot: Approx 24 kDa band observed in lysates of cell line K562 (calculated MW of 22.9 kDa according to NP_002786.2). Recommended concentration: 1-3 µg/mL. Peptide ELISA: antibody detection limit dilution 1:16000.
Restrictions:	For Research Use only

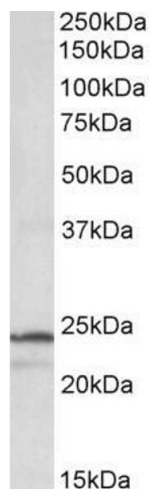
Handling

Format:	Liquid
Concentration:	0.5 mg/mL
Buffer:	Supplied at 0.5 mg/mL in Tris saline, 0.02 % sodium azide, pH 7.3 with 0.5 % bovine serum albumin.
Preservative:	Sodium azide
Precaution of Use:	This product contains Sodium azide: a POISONOUS AND HAZARDOUS SUBSTANCE which should be handled by trained staff only.
Handling Advice:	Minimize freezing and thawing.
Storage:	-20 °C
Storage Comment:	Aliquot and store at -20°C, with minimal freeze/thawing. A working aliquot may be refrigerated at 4°C for a few weeks and still remain viable.



Immunohistochemistry

Image 1. ABIN571231 (10µg/ml) staining of paraffin embedded Human Lung. Steamed antigen retrieval with citrate buffer pH 6, AP-staining.



Western Blotting

Image 2. Antibody (1µg/ml) staining of K562 lysate (35µg protein in RIPA buffer). Primary incubation was 1 hour. Detected by chemiluminescence.