

Datasheet for ABIN571232
anti-PSMB4 antibody (AA 230-239)[Go to Product page](#)

1 Image

Overview

Quantity:	100 µg
Target:	PSMB4
Binding Specificity:	AA 230-239
Reactivity:	Human, Mouse, Rat
Host:	Goat
Clonality:	Polyclonal
Conjugate:	This PSMB4 antibody is un-conjugated
Application:	Western Blotting (WB), ELISA

Product Details

Purpose:	PSMB4 (aa230-239)
Immunogen:	C-NRFQIATVTE
Sequence:	NRFQIATVTE
Isotype:	IgG
Cross-Reactivity:	Cow, Dog, Human, Mouse, Rat
Purification:	Purified from goat serum by ammonium sulphate precipitation followed by antigen affinity chromatography using the immunizing peptide.
Grade:	Verified

Target Details

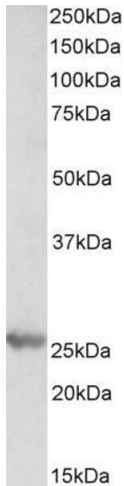
Target:	PSMB4
Alternative Name:	PSMB4 (PSMB4 Products)
Background:	PSMB4, proteasome (prosome, macropain) subunit, beta type, 4, HN3, HsN3, PROS26, macropain beta chain, multicatalytic endopeptidase complex beta chain, proteasome beta 4 subunit, proteasome beta chain, proteasome chain 3, proteasome subunit HsN3, proteaso
Gene ID:	5692, 19172, 58854
NCBI Accession:	NP_002787
Pathways:	Mitotic G1-G1/S Phases , DNA Replication , Synthesis of DNA

Application Details

Application Notes:	Western Blot: Approx 25-26 kDa band observed in lysates of cell lines HEK293, HeLa, and K562 and in Mouse and Rat Liver lysates (calculated MW of 29.1 kDa according to NP_002787.2). This molecular weight is routinely observed by other sources. Recommend Peptide ELISA: antibody detection limit dilution 1:8000.
Restrictions:	For Research Use only

Handling

Format:	Liquid
Concentration:	0.5 mg/mL
Buffer:	Supplied at 0.5 mg/mL in Tris saline, 0.02 % sodium azide, pH 7.3 with 0.5 % bovine serum albumin.
Preservative:	Sodium azide
Precaution of Use:	This product contains Sodium azide: a POISONOUS AND HAZARDOUS SUBSTANCE which should be handled by trained staff only.
Handling Advice:	Minimize freezing and thawing.
Storage:	-20 °C
Storage Comment:	Aliquot and store at -20°C, with minimal freeze/thawing. A working aliquot may be refrigerated at 4°C for a few weeks and still remain viable.



Western Blotting

Image 1. ABIN571232 (0.3µg/ml) staining of Mouse Liver lysate (35µg protein in RIPA buffer). Primary incubation was 1 hour. Detected by chemiluminescence.