



[Go to Product page](#)

Datasheet for ABIN5712345

TALDO Protein (AA 9-337, partial) (GST tag)

1 Image

Overview

Quantity:	100 µg
Target:	TALDO (TALDO1P1)
Protein Characteristics:	AA 9-337, partial
Origin:	Human
Source:	Escherichia coli (E. coli)
Protein Type:	Recombinant
Purification tag / Conjugate:	This TALDO protein is labelled with GST tag.
Application:	SDS-PAGE (SDS)

Product Details

Sequence: QRMESALDQL KQFTTVVADT GDFHAIDEYK PQDATTNPSL ILAAAQMPAY QELVEEAIAY
GRKLGGSQED QIKNAIDKLF VLFGAEILKK IPGRVSTEVD ARLSFDKDAM VARARRLIEL
YKEAGISKDR ILIKLSSTWE GIQAGKELEE QHGIHCNMTL LFSFAQAVAC AEAGVTLISP
FVGRILDWHV ANTDKKSYP LEDPGVKSVT KIYNYKFS YKTIVMGASF RNTGEIKALA
GCDFLTISPK LLGELLQDNA KLVPVLSAKA AQASDLEKIH LDEKSFRLH NEDQMAVEKL
SDGIRKFAAD AVKLERMLTE RMFNAENGK

Purification: SDS-PAGE

Purity: > 90 %

Target Details

Target: TALDO (TALDO1P1)

Target Details

Alternative Name:	TALDO (TALDO1P1 Products)
Background:	Transaldolase is important for the balance of metabolites in the pentose-phosphate pathway.
Molecular Weight:	64 kDa
UniProt:	P37837

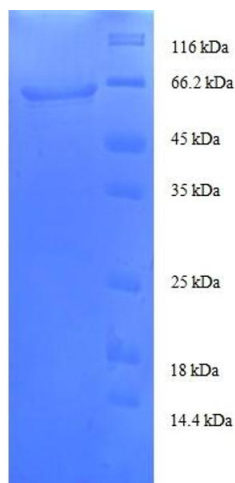
Application Details

Application Notes:	Optimal working dilution should be determined by the investigator.
Restrictions:	For Research Use only

Handling

Format:	Liquid
Concentration:	0.1-2 mg/mL
Buffer:	20 mM Tris-HCl based buffer, pH 8.0
Storage:	-80 °C, 4 °C, -20 °C
Storage Comment:	Store at -20°C, for extended storage, conserve at -20°C or -80°C. Repeated freezing and thawing is not recommended. Store working aliquots at 4°C for up to one week.

Images



SDS-PAGE

Image 1.