



Datasheet for ABIN571236

## anti-Phenylalanine Hydroxylase antibody (Internal Region)



[Go to Product page](#)

### 5 Images

#### Overview

Quantity:	100 µg
Target:	Phenylalanine Hydroxylase
Binding Specificity:	Internal Region
Reactivity:	Human, Rat
Host:	Goat
Clonality:	Polyclonal
Conjugate:	This Phenylalanine Hydroxylase antibody is un-conjugated
Application:	Western Blotting (WB), ELISA

#### Product Details

Purpose:	Phenylalanine Hydroxylase
Immunogen:	C-ESRPSRLKKDE
Sequence:	ESRPSRLKKD E
Isotype:	IgG
Cross-Reactivity:	Cow, Dog, Human, Mouse, Rat
Purification:	Purified from goat serum by ammonium sulphate precipitation followed by antigen affinity chromatography using the immunizing peptide.
Grade:	Verified

## Target Details

---

Target:	Phenylalanine Hydroxylase
Alternative Name:	PAH ( <a href="#">Phenylalanine Hydroxylase Products</a> )
Target Type:	Chemical
Background:	PAH, phenylalanine hydroxylase, PH, PKU, PKU1
Gene ID:	5053, 18478, 24616
NCBI Accession:	<a href="#">NP_000268</a>

## Application Details

---

Application Notes:	Western Blot: Approx 48 kDa band observed in Human Liver lysates and approx. 50-52 kDa in Rat Kidney lysates and in preliminary testing of Mouse Liver lysate (calculated MW of 51.9 kDa according to Hyman NP_000268.1 and Rat NP_036751.2). Recommended concen Peptide ELISA: antibody detection limit dilution 1:128000.
Restrictions:	For Research Use only

## Handling

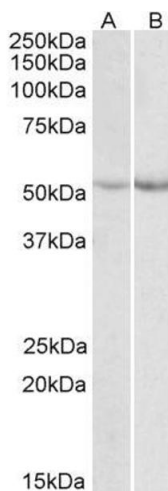
---

Format:	Liquid
Concentration:	0.5 mg/mL
Buffer:	Supplied at 0.5 mg/mL in Tris saline, 0.02 % sodium azide, pH 7.3 with 0.5 % bovine serum albumin.
Preservative:	Sodium azide
Precaution of Use:	This product contains Sodium azide: a POISONOUS AND HAZARDOUS SUBSTANCE which should be handled by trained staff only.
Handling Advice:	Minimize freezing and thawing.
Storage:	-20 °C
Storage Comment:	Aliquot and store at -20°C, with minimal freeze/thawing. A working aliquot may be refrigerated at 4°C for a few weeks and still remain viable.



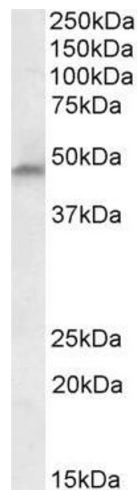
#### Western Blotting

**Image 1.** (ABIN571236) (0.3 µg/mL) staining of Rat Kidney lysate (35 µg protein in RIPA buffer). Detected by chemiluminescence.



#### Western Blotting

**Image 2.** ABIN571236 (0.1 µg/ml) staining of Mouse (A) and Rat (B) Liver lysate (35 µg protein in RIPA buffer). Detected by chemiluminescence.



#### Western Blotting

**Image 3.** ABIN571236 (0.3 µg/ml) staining of Human Liver lysate (35 µg protein in RIPA buffer). Detected by chemiluminescence.

Please check the [product details page](#) for more images. Overall 5 images are available for ABIN571236.