



[Go to Product page](#)

Datasheet for ABIN571240  
**anti-IGF1 antibody (Internal Region)**

5 Images

Overview

Quantity:	100 µg
Target:	IGF1
Binding Specificity:	Internal Region
Reactivity:	Human
Host:	Goat
Clonality:	Polyclonal
Conjugate:	This IGF1 antibody is un-conjugated
Application:	Western Blotting (WB), Immunohistochemistry (IHC), ELISA, Immunofluorescence (IF), Flow Cytometry (FACS)

Product Details

Purpose:	IGF1
Immunogen:	C-RSVRAQRHTD
Sequence:	RSVRAQRHTD
Isotype:	IgG
Specificity:	This antibody is expected to recognize all reported isoforms (NP_001104753.1, NP_001104754.1, NP_001104755.1, NP_000609.1).
Cross-Reactivity:	Cow, Dog, Human, Mouse, Pig, Rat
Purification:	Purified from goat serum by ammonium sulphate precipitation followed by antigen affinity chromatography using the immunizing peptide.

## Product Details

---

Grade: Verified

## Target Details

---

Target: IGF1

Alternative Name: IGF1 ([IGF1 Products](#))

Background: IGF1, insulin-like growth factor 1 (somatomedin C), IGF1A, IGFI, OTTHUMP00000195084, insulin-like growth factor 1

Gene ID: 3479, 16000, 24482

NCBI Accession: [NP\\_001104753](#), [NP\\_001104754](#), [NP\\_001104755](#), [NP\\_000609](#)

Pathways: [RTK Signaling](#), [Intracellular Steroid Hormone Receptor Signaling Pathway](#), [Peptide Hormone Metabolism](#), [Hormone Activity](#), [Regulation of Intracellular Steroid Hormone Receptor Signaling](#), [Regulation of Hormone Metabolic Process](#), [Regulation of Hormone Biosynthetic Process](#), [Stem Cell Maintenance](#), [Glycosaminoglycan Metabolic Process](#), [Regulation of Carbohydrate Metabolic Process](#), [Autophagy](#), [Smooth Muscle Cell Migration](#), [Activated T Cell Proliferation](#), [Positive Regulation of fat Cell Differentiation](#)

## Application Details

---

Application Notes: Immunohistochemistry: Paraffin embedded Human Spleen. Recommended concentration: 3.75 µg/mL.  
Western Blot: Approx 15 kDa band observed in Human Uterus lysates (calculated MW of 15.2 kDa according to NP\_001104754.1). Recommended concentration 0.5-2 µg/mL. Primary incubation 1 hour at room temperature. **Negative Control:** HepG2 cell  
Peptide ELISA: antibody detection limit dilution 1:32000.

Comment: **Immunofluorescence:** Strong expression of the protein seen in the cytoplasm of HEK293 cells. Recommended concentration: 10µg/ml.  
**Flow Cytometry:** Flow cytometric analysis of A549 cells. Recommended concentration: 10ug/ml

Restrictions: For Research Use only

## Handling

---

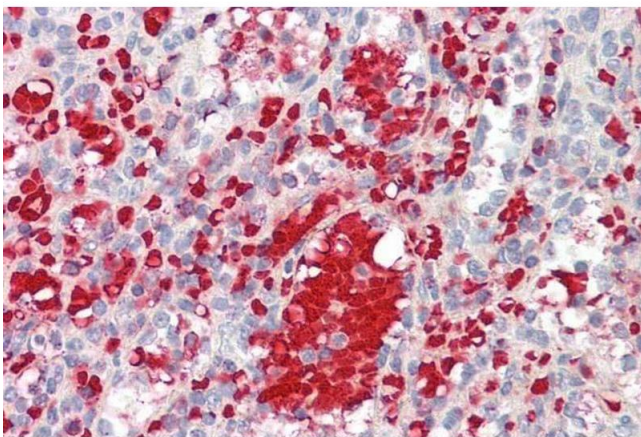
Format: Liquid

Concentration: 0.5 mg/mL

## Handling

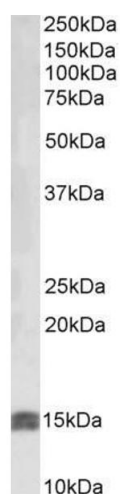
Buffer:	Supplied at 0.5 mg/mL in Tris saline, 0.02 % sodium azide, pH 7.3 with 0.5 % bovine serum albumin.
Preservative:	Sodium azide
Precaution of Use:	This product contains Sodium azide: a POISONOUS AND HAZARDOUS SUBSTANCE which should be handled by trained staff only.
Handling Advice:	Minimize freezing and thawing.
Storage:	-20 °C
Storage Comment:	Aliquot and store at -20°C, with minimal freeze/thawing. A working aliquot may be refrigerated at 4°C for a few weeks and still remain viable.

## Images



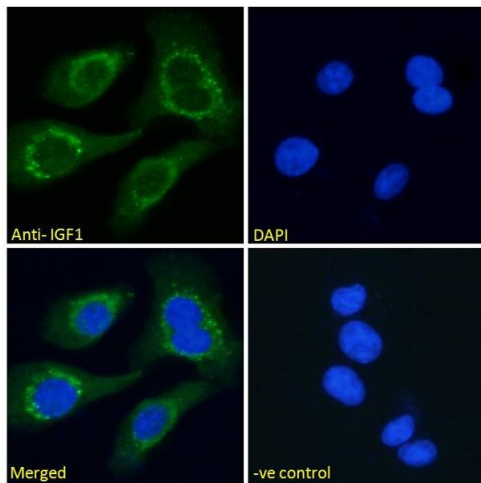
### Immunohistochemistry

**Image 1.** ABIN571240 (3.75µg/ml) staining of paraffin embedded Human Spleen. Steamed antigen retrieval with citrate buffer pH 6, AP-staining.



### Western Blotting

**Image 2.** Antibody (0.5µg/ml) staining of Human Uterus lysate (35µg protein in RIPA buffer). Primary incubation was 1 hour. Detected by chemiluminescence.



### Immunofluorescence

**Image 3.** ABIN571240 Immunofluorescence analysis of paraformaldehyde fixed HEK293 cells, permeabilized with 0.15% Triton. Primary incubation 1hr (10ug/ml) followed by Alexa Fluor 488 secondary antibody (2ug/ml), showing cytoplasmic staining. The nuclear stain is DAPI (blue). Negative control: Unimmunized goat IgG (10ug/ml) followed by Alexa Fluor 488 secondary antibody (2ug/ml).

Please check the [product details page](#) for more images. Overall 5 images are available for ABIN571240.