

Datasheet for ABIN571241
anti-RHCG antibody (Internal Region)

3 Images

[Go to Product page](#)

Overview

Quantity:	100 µg
Target:	RHCG
Binding Specificity:	Internal Region
Reactivity:	Human
Host:	Goat
Clonality:	Polyclonal
Conjugate:	This RHCG antibody is un-conjugated
Application:	Western Blotting (WB), ELISA, Immunohistochemistry (IHC)

Product Details

Purpose:	RHCG
Immunogen:	C-ERQNSVYQSD
Sequence:	ERQNSVYQSD
Isotype:	IgG
Cross-Reactivity:	Dog, Human, Pig
Purification:	Purified from goat serum by ammonium sulphate precipitation followed by antigen affinity chromatography using the immunizing peptide.
Grade:	Verified

Target Details

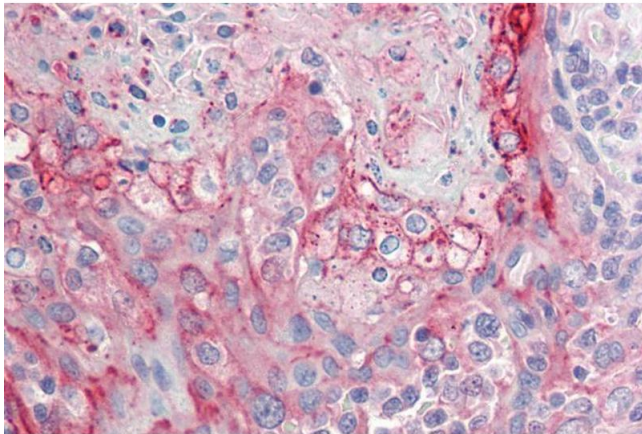
Target:	RHCG
Alternative Name:	RHCG (RHCG Products)
Background:	RHCG, Rh family, C glycoprotein, C15orf6, PDRC2, RHGK, SLC42A3, Rh type C glycoprotein, Rhesus blood group, C glycoprotein
Gene ID:	51458
NCBI Accession:	NP_057405

Application Details

Application Notes:	<p>Immunohistochemistry: Paraffin embedded Human Tonsil and Kidney. Recommended concentration: 5 µg/mL.</p> <p>Western Blot: Approx 60 kDa band observed in Human Testis lysates (calculated MW of 53.2 kDa according to NP_057405.1). The observed molecular weight corresponds to earlier findings in literature with different antibodies (Liu et al, J Biol Chem. 2000 Aug</p> <p>Peptide ELISA: antibody detection limit dilution 1:16000.</p>
Restrictions:	For Research Use only

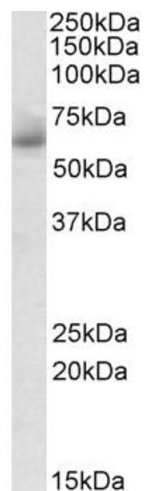
Handling

Format:	Liquid
Concentration:	0.5 mg/mL
Buffer:	Supplied at 0.5 mg/mL in Tris saline, 0.02 % sodium azide, pH 7.3 with 0.5 % bovine serum albumin.
Preservative:	Sodium azide
Precaution of Use:	This product contains Sodium azide: a POISONOUS AND HAZARDOUS SUBSTANCE which should be handled by trained staff only.
Handling Advice:	Minimize freezing and thawing.
Storage:	-20 °C
Storage Comment:	Aliquot and store at -20°C, with minimal freeze/thawing. A working aliquot may be refrigerated at 4°C for a few weeks and still remain viable.



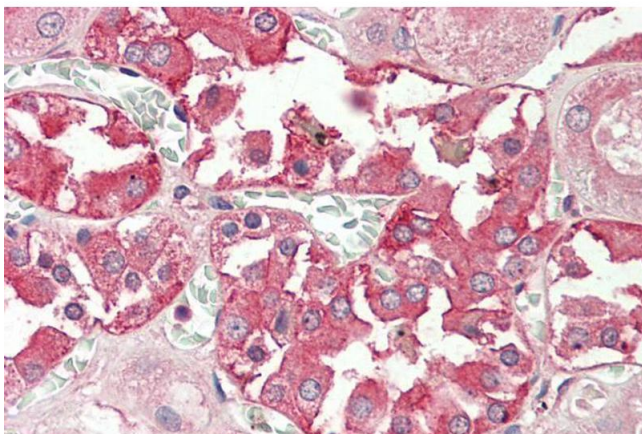
Immunohistochemistry

Image 1. ABIN571241 (5µg/ml) staining of paraffin embedded Human Tonsil. Steamed antigen retrieval with citrate buffer pH 6, AP-staining.



Western Blotting

Image 2. ABIN571241 (1µg/ml) staining of Human Testis lysate (35µg protein in RIPA buffer). Detected by chemiluminescence.



Immunohistochemistry

Image 3. ABIN571241 (5µg/ml) staining of paraffin embedded Human Kidney. Steamed antigen retrieval with citrate buffer pH 6, AP-staining.