

Datasheet for ABIN571243  
**anti-BIRC3 antibody (Internal Region)**[Go to Product page](#)

## 1 Image

## Overview

|                      |                                      |
|----------------------|--------------------------------------|
| Quantity:            | 100 µg                               |
| Target:              | BIRC3                                |
| Binding Specificity: | Internal Region                      |
| Reactivity:          | Rat                                  |
| Host:                | Goat                                 |
| Clonality:           | Polyclonal                           |
| Conjugate:           | This BIRC3 antibody is un-conjugated |
| Application:         | Western Blotting (WB), ELISA         |

## Product Details

|                   |   |
|-------------------|---|
| Purpose:          | BIRC3   |
| Immunogen:        | C-SVNNLEATSQP   |
| Sequence:         | SVNNLEATSQ P  |
| Isotype:          | IgG   |
| Specificity:      | Reported variants represent identical protein: NP_892007.1, NP_001156.1.  |
| Cross-Reactivity: | Human   |
| Purification:     | Purified from goat serum by ammonium sulphate precipitation followed by antigen affinity chromatography using the immunizing peptide. |
| Grade:            | Verified  |

## Target Details

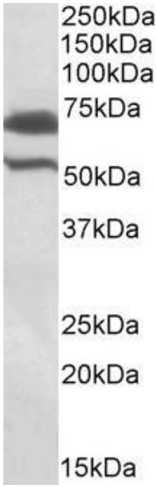
|                   |  |
|-------------------|--|
| Target:           | BIRC3  |
| Alternative Name: | BIRC3 ( <a href="#">BIRC3 Products</a> )   |
| Background:       | BIRC3, baculoviral IAP repeat-containing 3, AIP1, API2, CIAP2, HAIP1, HIAP1, MALT2, MIHC, RNF49, c-IAP2, TNFR2-TRAF signaling complex protein, apoptosis inhibitor 2, baculoviral IAP repeat-containing protein 3, inhibitor of apoptosis protein 1, mammalian |
| Gene ID:          | 330  |
| NCBI Accession:   | <a href="#">NP_001156</a>  |
| Pathways:         | <a href="#">Apoptosis</a> , <a href="#">Caspase Cascade in Apoptosis</a> , <a href="#">Activation of Innate immune Response</a> , <a href="#">Toll-Like Receptors Cascades</a>   |

## Application Details

|                    |  |
|--------------------|--|
| Application Notes: | Western Blot: Experiments gave bands at approx 70 kDa and 52 kDa in Rat Testis lysates. These bands correspond to earlier findings with different antibodies from other sources. This protein has a calculated MW of 67.3 kDa according to Rat NP_076477.2. Recom<br>Peptide ELISA: antibody detection limit dilution 1:16000. |
| Restrictions:      | For Research Use only  |

## Handling

|                    |  |
|--------------------|--|
| Format:            | Liquid   |
| Concentration:     | 0.5 mg/mL  |
| Buffer:            | Supplied at 0.5 mg/mL in Tris saline, 0.02 % sodium azide, pH 7.3 with 0.5 % bovine serum albumin.   |
| Preservative:      | Sodium azide   |
| Precaution of Use: | This product contains Sodium azide: a POISONOUS AND HAZARDOUS SUBSTANCE which should be handled by trained staff only.                         |
| Handling Advice:   | Minimize freezing and thawing.   |
| Storage:           | -20 °C   |
| Storage Comment:   | Aliquot and store at -20°C, with minimal freeze/thawing. A working aliquot may be refrigerated at 4°C for a few weeks and still remain viable. |



Western Blotting

**Image 1.** ABIN571243 (1µg/ml) staining of Rat Testis lysate (35µg protein in RIPA buffer). Primary incubation was 1 hour. Detected by chemiluminescence.