

Datasheet for ABIN5712468

PROCR Protein (AA 18-210, partial) (His tag)[Go to Product page](#)**1** Image

Overview

Quantity:	100 µg
Target:	PROCR
Protein Characteristics:	AA 18-210, partial
Origin:	Human
Source:	Escherichia coli (E. coli)
Protein Type:	Recombinant
Purification tag / Conjugate:	This PROCR protein is labelled with His tag.
Application:	SDS-PAGE (SDS)

Product Details

Sequence:	SQDASDGLQR LHMLQISYFR DPYHVWYQGN ASLGGHLTHV LEGPDTNTTI IQLQLQEPE SWARTQSQLQ SYLLQFHGLV RLVHQERTLA FPLTIRCFLG CELPPEGSRA HVFFEVAVNG SSFVSFRPER ALWQADTQVT SGVVTFTLQQ LNAYNRTRYE LREFLEDTCV QYVQKHISAE NTKGSQTSRS YTS
Purification:	SDS-PAGE
Purity:	> 90 %

Target Details

Target:	PROCR
Alternative Name:	EPCR (PROCR Products)
Background:	Binds activated protein C. Enhances protein C activation by the thrombin-thrombomodulin

Target Details

complex, plays a role in the protein C pathway controlling blood coagulation.

Molecular Weight: 26.1 kDa

UniProt: [Q9UNN8](#)

Application Details

Application Notes: Optimal working dilution should be determined by the investigator.

Restrictions: For Research Use only

Handling

Format: Liquid

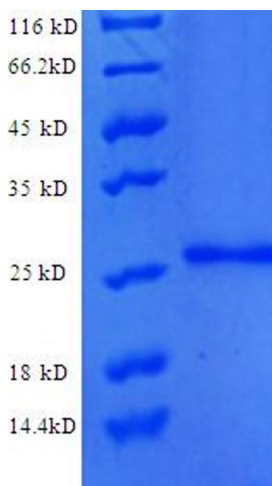
Concentration: 0.1-2 mg/mL

Buffer: 20 mM Tris-HCl based buffer, pH 8.0

Storage: -80 °C, 4 °C, -20 °C

Storage Comment: Store at -20°C, for extended storage, conserve at -20°C or -80°C. Repeated freezing and thawing is not recommended. Store working aliquots at 4°C for up to one week.

Images



SDS-PAGE

Image 1.