



[Go to Product page](#)

Datasheet for ABIN571252

## anti-ALDH5A1 antibody (AA 485-496)

### 2 Images

#### Overview

|                      |  |
|----------------------|--|
| Quantity:            | 100 µg   |
| Target:              | ALDH5A1  |
| Binding Specificity: | AA 485-496   |
| Reactivity:          | Human, Rat, Mouse  |
| Host:                | Goat   |
| Clonality:           | Polyclonal   |
| Conjugate:           | This ALDH5A1 antibody is un-conjugated                   |
| Application:         | ELISA, Western Blotting (WB), Immunohistochemistry (IHC) |

#### Product Details

|                   |  |
|-------------------|--|
| Purpose:          | ALDH5A1 (aa 485-496)   |
| Immunogen:        | C-SQDPAQIWRVAE   |
| Sequence:         | SQDPAQIWRV AE  |
| Isotype:          | IgG  |
| Specificity:      | This antibody is expected to recognize both reported isoforms (NP_733936.1, NP_001071.1).<br>Amino acid numbering in name calculated from NP_733936.1. |
| Cross-Reactivity: | Cow, Dog, Human, Mouse, Rat  |
| Purification:     | Purified from goat serum by ammonium sulphate precipitation followed by antigen affinity chromatography using the immunizing peptide.                  |
| Grade:            | Verified   |

## Target Details

---

|                   |  |
|-------------------|--|
| Target:           | ALDH5A1  |
| Alternative Name: | ALDH5A1 ( <a href="#">ALDH5A1 Products</a> )   |
| Background:       | ALDH5A1, aldehyde dehydrogenase 5 family, member A1, SSADH, SSDH, NAD(+)-dependent succinic semialdehyde dehydrogenase, aldehyde dehydrogenase 5A1, mitochondrial succinate semialdehyde dehydrogenase, succinate-semialdehyde dehydrogenase |
| Gene ID:          | 7915, 214579, 291133   |
| NCBI Accession:   | <a href="#">NP_733936</a> , <a href="#">NP_001071</a>  |
| Pathways:         | <a href="#">Monocarboxylic Acid Catabolic Process</a>  |

## Application Details

---

|                    |  |
|--------------------|--|
| Application Notes: | <p>Immunohistochemistry: In paraffin embedded Human Liver shows heavy textured cytoplasm staining in hepatocytes, consistent with mitochondria.. Recommended concentration, 5-10 µg/mL.</p> <p>Western Blot: Approx 55 kDa band observed in Human Liver lysates (calculated MW of 58.7 kDa according to NP_733936.1). Recommended concentration: 0.3-1 µg/mL. Please note that both this product and EB10436 detects a 50 kDa in Mouse and Rat Liver lysates (cal</p> <p>Peptide ELISA: antibody detection limit dilution 1:32000.</p> |
| Restrictions:      | For Research Use only  |

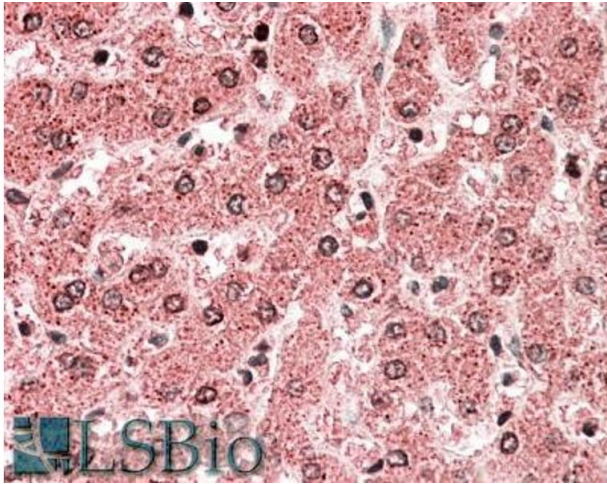
## Handling

---

|                    |  |
|--------------------|--|
| Format:            | Liquid   |
| Concentration:     | 0.5 mg/mL  |
| Buffer:            | Supplied at 0.5 mg/mL in Tris saline, 0.02 % sodium azide, pH 7.3 with 0.5 % bovine serum albumin.                     |
| Preservative:      | Sodium azide   |
| Precaution of Use: | This product contains Sodium azide: a POISONOUS AND HAZARDOUS SUBSTANCE which should be handled by trained staff only. |
| Handling Advice:   | Minimize freezing and thawing.   |
| Storage:           | -20 °C   |
| Storage Comment:   | Aliquot and store at -20°C, with minimal freeze/thawing. A working aliquot may be refrigerated                         |

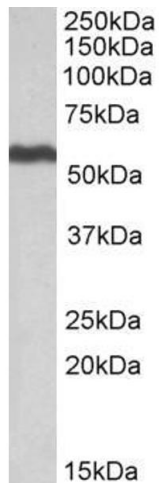
at 4°C for a few weeks and still remain viable.

Images



**Immunohistochemistry**

**Image 1.** ABIN571252 (5µg/ml) staining of paraffin embedded Human Liver. Steamed antigen retrieval with citrate buffer pH 6, AP-staining.



**Western Blotting**

**Image 2.** ABIN571252 (0.5µg/ml) staining of Human Liver lysate (35µg protein in RIPA buffer). Primary incubation was 1 hour. Detected by chemiluminescence.