

Datasheet for ABIN5712558

LTBR Protein (AA 31-224, Extracellular) (His tag)[Go to Product page](#)**1** Image

Overview

Quantity:	100 µg
Target:	LTBR
Protein Characteristics:	Extracellular, AA 31-224
Origin:	Human
Source:	Escherichia coli (E. coli)
Protein Type:	Recombinant
Purification tag / Conjugate:	This LTBR protein is labelled with His tag.
Application:	SDS-PAGE (SDS)

Product Details

Sequence:	QAVPPYASEN QTCRDQEKEY YEPQHRICCS RCPPGTYVSA KCSRIRDTVCA ATCAENSYNE HWNLYLTICQL CRPCDPVMGL EEIAPCTSKR KTQCRCQPGM FCAAWALECT HCELLSDCPP GTEAELKDEV GKGNNHCVPC KAGHFQNTSS PSARCQPHTR CENQGLVEAA PGTAQSDTTC KNPLEPLPPE MSGT
Purification:	SDS-PAGE
Purity:	> 90 %

Target Details

Target:	LTBR
Alternative Name:	TNR3 (LTBR Products)
Background:	Receptor for the heterotrimeric lymphotoxin containing LTA and LTB, and for TNFS14/LIGHT.

Target Details

Promotes apoptosis via TRAF3 and TRAF5. May play a role in the development of lymphoid organs.

Molecular Weight: 25.5 kDa

UniProt: [P36941](#)

Pathways: [NF-kappaB Signaling](#)

Application Details

Application Notes: Optimal working dilution should be determined by the investigator.

Restrictions: For Research Use only

Handling

Format: Liquid

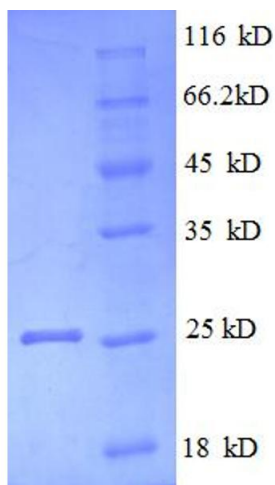
Concentration: 0.1-2 mg/mL

Buffer: 20 mM Tris-HCl based buffer, pH 8.0

Storage: -80 °C, 4 °C, -20 °C

Storage Comment: Store at -20°C, for extended storage, conserve at -20°C or -80°C. Repeated freezing and thawing is not recommended. Store working aliquots at 4°C for up to one week.

Images



SDS-PAGE

Image 1.