

Datasheet for ABIN571258  
**anti-DCTN3 antibody (Internal Region)**[Go to Product page](#)

## 7 Images

## Overview

Quantity:	100 µg
Target:	DCTN3 (Dctn3)
Binding Specificity:	Internal Region
Reactivity:	Human, Rat
Host:	Goat
Clonality:	Polyclonal
Conjugate:	This DCTN3 antibody is un-conjugated
Application:	ELISA, Immunohistochemistry (IHC), Western Blotting (WB), Flow Cytometry (FACS)

## Product Details

Purpose:	DCTN3
Immunogen:	C-QVALGNISSKRE
Sequence:	QVALGNISSK RE
Isotype:	IgG
Specificity:	This antibody is expected to recognize both reported isoforms (NP_009165.1, NP_077324.1).
Cross-Reactivity:	Cow, Dog, Human, Mouse, Rat
Purification:	Purified from goat serum by ammonium sulphate precipitation followed by antigen affinity chromatography using the immunizing peptide.
Grade:	Verified

## Target Details

Target:	DCTN3 (Dctn3)
Alternative Name:	DCTN3 ( <a href="#">Dctn3 Products</a> )
Background:	DCTN3, dynactin 3 (p22), DCTN-22, DCTN22, MGC111190, dynactin 3, dynactin 3, isoform 1, dynactin light chain
Gene ID:	11258, 53598, 362504
NCBI Accession:	<a href="#">NP_009165</a> , <a href="#">NP_077324</a>
Pathways:	<a href="#">M Phase</a>

## Application Details

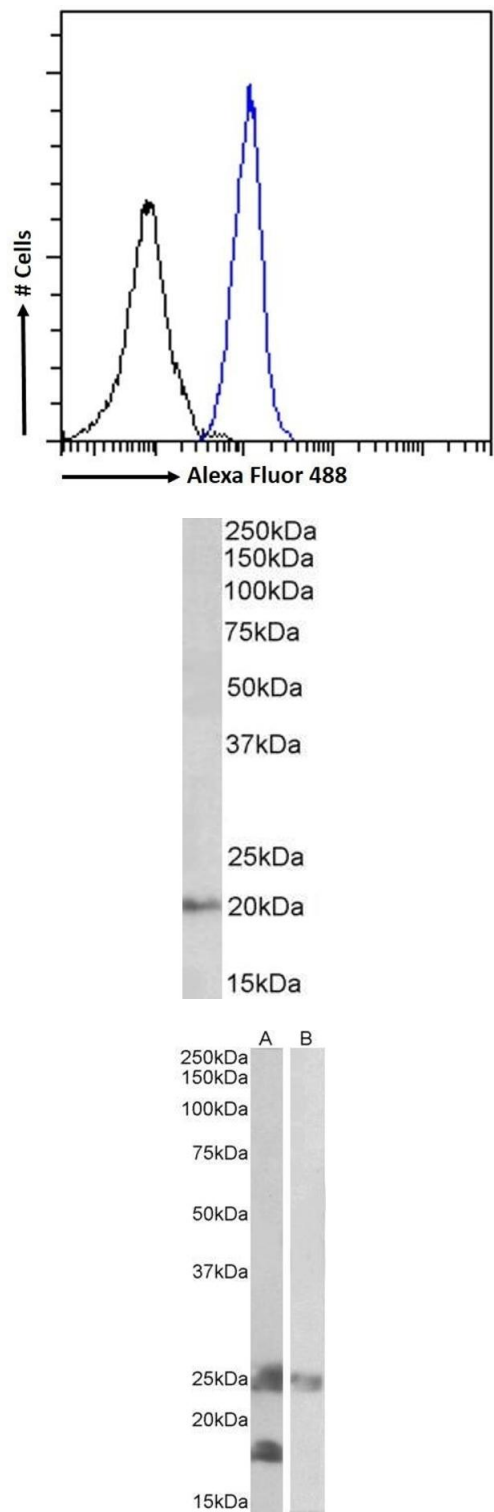
Application Notes:	Immunohistochemistry: Paraffin embedded Human Kidney. Recommended concentration: 6-8 µg/mL.  Western Blot: Approx 20 kDa band observed in Human Liver lysates, and approx. 18 kDa in Rat Kidney lysates and in preliminary testing of Mouse Kidney lysate (calculated MW of 19.5 kDa according to Human NP_077324.1 and 21.1 kDa according to Rat NP_001102129.  Peptide ELISA: antibody detection limit dilution 1:16000.
Comment:	<b>Flow Cytometry:</b> Flow cytometric analysis of K562 cells. Recommended concentration: 10ug/ml.
Restrictions:	For Research Use only

## Handling

Format:	Liquid
Concentration:	0.5 mg/mL
Buffer:	Supplied at 0.5 mg/mL in Tris saline, 0.02 % sodium azide, pH 7.3 with 0.5 % bovine serum albumin.
Preservative:	Sodium azide
Precaution of Use:	This product contains Sodium azide: a POISONOUS AND HAZARDOUS SUBSTANCE which should be handled by trained staff only.
Handling Advice:	Minimize freezing and thawing.
Storage:	-20 °C
Storage Comment:	Aliquot and store at -20°C, with minimal freeze/thawing. A working aliquot may be refrigerated

at 4°C for a few weeks and still remain viable.

Images



Flow Cytometry

**Image 1.** (ABIN571258) Flow cytometric analysis of paraformaldehyde fixed K562 cells (blue line), permeabilized with 0.5 % Triton. Primary incubation 1hr (10 µg/mL) followed by Alexa Fluor 488 secondary antibody (1 µg/mL). IgG control: Unimmunized goat IgG (black line) fo

Western Blotting

**Image 2.** ABIN571258 (0.03µg/ml) staining of Human Kidney lysate (35µg protein in RIPA buffer). Primary incubation was 1 hour. Detected by chemiluminescence.

Western Blotting

**Image 3.** ABIN571258 (0.2µg/ml) staining of Mouse (A) and Rat (B) Skeletal Muscle lysates (35µg protein in RIPA buffer). Primary incubation was 1 hour. Detected by chemiluminescence.

Please check the [product details page](#) for more images. Overall 7 images are available for ABIN571258.