

Datasheet for ABIN571259
anti-AGTPBP1 antibody (Internal Region)[Go to Product page](#)

1 Image

Overview

Quantity:	100 µg
Target:	AGTPBP1
Binding Specificity:	Internal Region
Reactivity:	Human
Host:	Goat
Clonality:	Polyclonal
Conjugate:	This AGTPBP1 antibody is un-conjugated
Application:	Western Blotting (WB), ELISA

Product Details

Purpose:	AGTPBP1 / NNA1
Immunogen:	C-TSPLEYNLPS
Sequence:	TSPLEYNLPS
Isotype:	IgG
Cross-Reactivity:	Cow, Dog, Human, Mouse, Rat
Purification:	Purified from goat serum by ammonium sulphate precipitation followed by antigen affinity chromatography using the immunizing peptide.
Grade:	Verified

Target Details

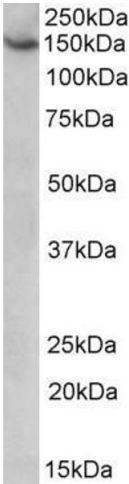
Target:	AGTPBP1
Alternative Name:	AGTPBP1 (AGTPBP1 Products)
Background:	AGTPBP1, ATP/GTP binding protein 1, DKFZp686M20191, KIAA1035, NNA1
Gene ID:	23287, 67269, 290986
NCBI Accession:	NP_056054
Pathways:	Proton Transport

Application Details

Application Notes:	Western Blot: Approx 150 kDa band observed in lysates of cell line HeLa (calculated MW of 134 kDa according to NP_056054.2). Recommended concentration: 1-3 µg/mL. Peptide ELISA: antibody detection limit dilution 1:8000.
Restrictions:	For Research Use only

Handling

Format:	Liquid
Concentration:	0.5 mg/mL
Buffer:	Supplied at 0.5 mg/mL in Tris saline, 0.02 % sodium azide, pH 7.3 with 0.5 % bovine serum albumin.
Preservative:	Sodium azide
Precaution of Use:	This product contains Sodium azide: a POISONOUS AND HAZARDOUS SUBSTANCE which should be handled by trained staff only.
Handling Advice:	Minimize freezing and thawing.
Storage:	-20 °C
Storage Comment:	Aliquot and store at -20°C, with minimal freeze/thawing. A working aliquot may be refrigerated at 4°C for a few weeks and still remain viable.



Western Blotting

Image 1. ABIN571259 (1µg/ml) staining of HeLa lysate (35µg protein in RIPA buffer). Primary incubation was 1 hour. Detected by chemiluminescence.