

Datasheet for ABIN571261
anti-PTCHD1 antibody (Internal Region)[Go to Product page](#)

1 Image

Overview

Quantity:	100 µg
Target:	PTCHD1
Binding Specificity:	Internal Region
Reactivity:	Human
Host:	Goat
Clonality:	Polyclonal
Conjugate:	This PTCHD1 antibody is un-conjugated
Application:	Western Blotting (WB), ELISA

Product Details

Purpose:	PTCHD1
Immunogen:	C-DFQKTSRVSER
Sequence:	DFQKTSRVSE R
Isotype:	IgG
Cross-Reactivity:	Cow, Dog, Human, Mouse, Rat
Purification:	Purified from goat serum by ammonium sulphate precipitation followed by antigen affinity chromatography using the immunizing peptide.
Grade:	Verified

Target Details

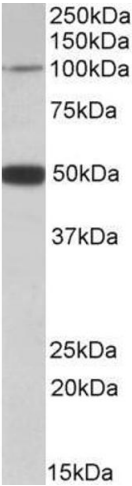
Target:	PTCHD1
Alternative Name:	PTCHD1 (PTCHD1 Products)
Background:	PTCHD1, patched domain containing 1, FLJ30296, MGC149798
Gene ID:	139411, 211612, 317517
NCBI Accession:	NP_775766

Application Details

Application Notes:	Western Blot: Approx 100 kDa band observed in Human Brain (Cerebellum) lysates (calculated MW of 101 kDa according to NP_775766.2). Recommended concentration: 0.5-2 µg/mL. An additional band of unknown identity was also consistently observed at 50 kDa. This Peptide ELISA: antibody detection limit dilution 1:16000.
Restrictions:	For Research Use only

Handling

Format:	Liquid
Concentration:	0.5 mg/mL
Buffer:	Supplied at 0.5 mg/mL in Tris saline, 0.02 % sodium azide, pH 7.3 with 0.5 % bovine serum albumin.
Preservative:	Sodium azide
Precaution of Use:	This product contains Sodium azide: a POISONOUS AND HAZARDOUS SUBSTANCE which should be handled by trained staff only.
Handling Advice:	Minimize freezing and thawing.
Storage:	-20 °C
Storage Comment:	Aliquot and store at -20°C, with minimal freeze/thawing. A working aliquot may be refrigerated at 4°C for a few weeks and still remain viable.



Western Blotting

Image 1. ABIN571261 (0.5µg/ml) staining of Human Cerebellum lysate (35µg protein in RIPA buffer). Primary incubation was 1 hour. Detected by chemiluminescence.