



[Go to Product page](#)

Datasheet for ABIN571262  
**anti-RBM20 antibody (AA 717-727)**

3 Images

Overview

Quantity:	100 µg
Target:	RBM20
Binding Specificity:	AA 717-727
Reactivity:	Human
Host:	Goat
Clonality:	Polyclonal
Conjugate:	This RBM20 antibody is un-conjugated
Application:	Western Blotting (WB), ELISA

Product Details

Purpose:	RBM20 (aa717-727)
Immunogen:	C-QLDKAELDERP
Sequence:	QLDKAELDER P
Isotype:	IgG
Cross-Reactivity:	Cow, Human, Mouse, Rat
Purification:	Purified from goat serum by ammonium sulphate precipitation followed by antigen affinity chromatography using the immunizing peptide.
Grade:	Verified

## Target Details

---

Target:	RBM20
Alternative Name:	RBM20 ( <a href="#">RBM20 Products</a> )
Background:	RBM20, RNA binding motif protein 20
Gene ID:	282996, 73713, 309544
NCBI Accession:	<a href="#">NP_001127835</a>

## Application Details

---

Application Notes:	Western Blot: Approx 150 kDa band observed in lysates of cell line HEK293 (calculated MW of 134 kDa according to Human NP_001127835.2). Preliminary experiments also showed a 150 kDa band in IU2OS cell lysate and in Human Smooth Muscle lysate. This molecular Peptide ELISA: antibody detection limit dilution 1:64000.
Restrictions:	For Research Use only

## Handling

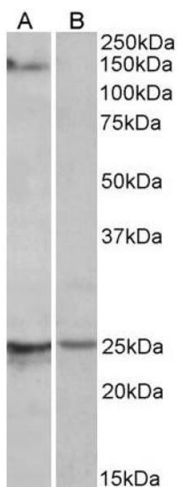
---

Format:	Liquid
Concentration:	0.5 mg/mL
Buffer:	Supplied at 0.5 mg/mL in Tris saline, 0.02 % sodium azide, pH 7.3 with 0.5 % bovine serum albumin.
Preservative:	Sodium azide
Precaution of Use:	This product contains Sodium azide: a POISONOUS AND HAZARDOUS SUBSTANCE which should be handled by trained staff only.
Handling Advice:	Minimize freezing and thawing.
Storage:	-20 °C
Storage Comment:	Aliquot and store at -20°C, with minimal freeze/thawing. A working aliquot may be refrigerated at 4°C for a few weeks and still remain viable.



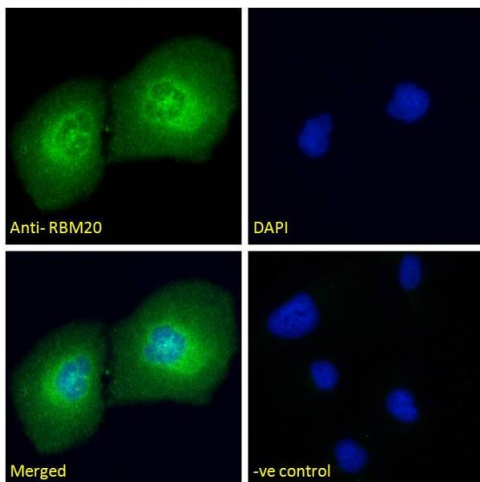
### Western Blotting

**Image 1.** ABIN571262 (0.3µg/ml) staining of HEK293 cell lysate (35µg protein in RIPA buffer) Detected by chemiluminescence.



### Western Blotting

**Image 2.** ABIN571262 (1µg/ml) staining of Mouse Heart lysate (35µg protein in RIPA buffer) with (B) and without (A) blocking with the immunising peptide. Detected by chemiluminescence.



### Immunofluorescence

**Image 3.** ABIN571262 Immunofluorescence analysis of paraformaldehyde fixed U2OS cells, permeabilized with 0.15% Triton. Primary incubation 1hr (10ug/ml) followed by Alexa Fluor 488 secondary antibody (4ug/ml), showing nuclear and Golgi apparatus staining. The nuclear