

Datasheet for ABIN571263
anti-TMEM205 antibody (AA 142-151)



[Go to Product page](#)

2 Images

Overview

Quantity:	100 µg
Target:	TMEM205
Binding Specificity:	AA 142-151
Reactivity:	Human
Host:	Goat
Clonality:	Polyclonal
Conjugate:	This TMEM205 antibody is un-conjugated
Application:	ELISA, Western Blotting (WB), Immunohistochemistry (IHC)

Product Details

Purpose:	TMEM205 (aa142-151)
Immunogen:	C-QLREKDPKYS
Sequence:	QLREKDPKYS
Isotype:	IgG
Specificity:	Reported variants represent identical protein: NP_940938.1, NP_212133.1, NP_001138888.1.
Cross-Reactivity:	Human, Mouse, Rat
Purification:	Purified from goat serum by ammonium sulphate precipitation followed by antigen affinity chromatography using the immunizing peptide.
Grade:	Verified

Target Details

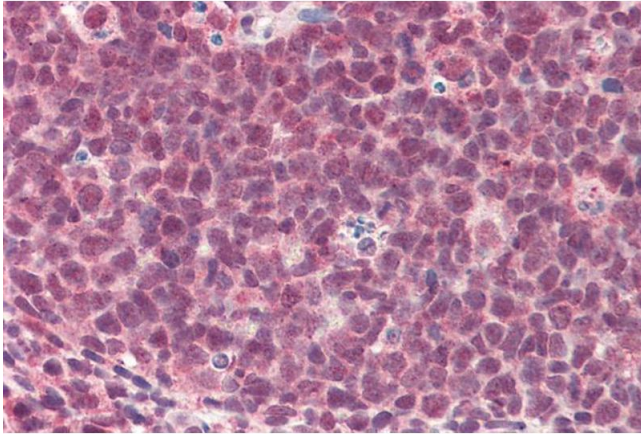
Target:	TMEM205
Alternative Name:	TMEM205 (TMEM205 Products)
Background:	TMEM205, transmembrane protein 205, MGC110858, MGC3205, UNQ501, MBC3205
Gene ID:	374882, 235043, 300441
NCBI Accession:	NP_212133

Application Details

Application Notes:	<p>Immunohistochemistry: Paraffin embedded Human Tonsil. Recommended concentration: 5 µg/mL.</p> <p>Western Blot: Approx 22 kDa band observed in Human Pancreas lysates (calculated MW of 21.2 kDa according to NP_212133.1). Recommended concentration: 0.03-0.1 µg/mL. Primary incubation was 1 hour.</p> <p>Peptide ELISA: antibody detection limit dilution 1:16000.</p>
Restrictions:	For Research Use only

Handling

Format:	Liquid
Concentration:	0.5 mg/mL
Buffer:	Supplied at 0.5 mg/mL in Tris saline, 0.02 % sodium azide, pH 7.3 with 0.5 % bovine serum albumin.
Preservative:	Sodium azide
Precaution of Use:	This product contains Sodium azide: a POISONOUS AND HAZARDOUS SUBSTANCE which should be handled by trained staff only.
Handling Advice:	Minimize freezing and thawing.
Storage:	-20 °C
Storage Comment:	Aliquot and store at -20°C, with minimal freeze/thawing. A working aliquot may be refrigerated at 4°C for a few weeks and still remain viable.



Immunohistochemistry

Image 1. ABIN571263 (5µg/ml) staining of paraffin embedded Human Tonsil. Steamed antigen retrieval with citrate buffer pH 6, AP-staining.



Western Blotting

Image 2. ABIN571263 (0.03µg/ml) staining of Human Pancreas lysate (35µg protein in RIPA buffer). Detected by chemiluminescence.