

Datasheet for ABIN5712634

**RPL29 Protein (AA 1-63, full length) (His tag)**[Go to Product page](#)**1** Image

## Overview

Quantity:	100 µg
Target:	RPL29
Protein Characteristics:	AA 1-63, full length
Origin:	E. coli
Source:	Escherichia coli (E. coli)
Protein Type:	Recombinant
Purification tag / Conjugate:	This RPL29 protein is labelled with His tag.
Application:	SDS-PAGE (SDS)

## Product Details

Sequence:	MKAKELREKS VEELNTELLN LLREQFNLRM QAASGQLQQS HLLKQVRRDV ARVKTLLENEK AGA
Purification:	SDS-PAGE
Purity:	> 90 %

## Target Details

Target:	RPL29
Alternative Name:	RL29 ( <a href="#">RPL29 Products</a> )
Background:	Binds 23S rRNA. It is not essential for growth. One of the proteins that surrounds the polypeptide exit tunnel on the outside of the subunit. Contacts trigger factor .
Molecular Weight:	11.4 kDa

## Target Details

---

UniProt: [P0A7M6](#)

## Application Details

---

Application Notes: Optimal working dilution should be determined by the investigator.

Restrictions: For Research Use only

## Handling

---

Format: Liquid

Concentration: 0.1-2 mg/mL

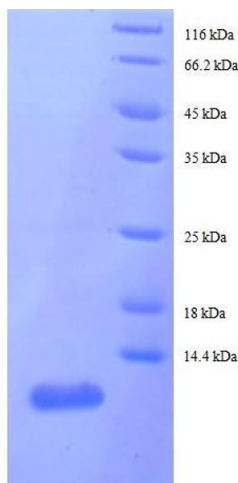
Buffer: 20 mM Tris-HCl based buffer, pH 8.0

Storage: -80 °C, 4 °C, -20 °C

Storage Comment: Store at -20°C, for extended storage, conserve at -20°C or -80°C. Repeated freezing and thawing is not recommended. Store working aliquots at 4°C for up to one week.

## Images

---



### SDS-PAGE

Image 1.