

Datasheet for ABIN5712636

RPL29 Protein (AA 1-63, full length) (GST tag)[Go to Product page](#)**1** Image

Overview

Quantity:	100 µg
Target:	RPL29
Protein Characteristics:	AA 1-63, full length
Origin:	E. coli
Source:	Escherichia coli (E. coli)
Protein Type:	Recombinant
Purification tag / Conjugate:	This RPL29 protein is labelled with GST tag.
Application:	SDS-PAGE (SDS)

Product Details

Sequence:	MKAKELREKS VEELNTELLN LLREQFNLRM QAASGQLQQS HLLKQVRRDV ARVKTLNNEK AGA
Purification:	SDS-PAGE
Purity:	> 90 %

Target Details

Target:	RPL29
Alternative Name:	RL29 (RPL29 Products)
Background:	Binds 23S rRNA. It is not essential for growth. One of the proteins that surrounds the polypeptide exit tunnel on the outside of the subunit. Contacts trigger factor .
Molecular Weight:	34.7 kDa

Target Details

UniProt: [P0A7M6](#)

Application Details

Application Notes: Optimal working dilution should be determined by the investigator.

Restrictions: For Research Use only

Handling

Format: Liquid

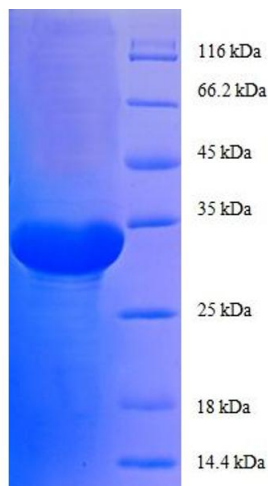
Concentration: 0.1-2 mg/mL

Buffer: 20 mM Tris-HCl based buffer, pH 8.0

Storage: -80 °C, 4 °C, -20 °C

Storage Comment: Store at -20°C, for extended storage, conserve at -20°C or -80°C. Repeated freezing and thawing is not recommended. Store working aliquots at 4°C for up to one week.

Images



SDS-PAGE

Image 1.