

Datasheet for ABIN571265
anti-CYP24A1 antibody (Internal Region)

2 Images

[Go to Product page](#)

Overview

Quantity:	100 µg
Target:	CYP24A1
Binding Specificity:	Internal Region
Reactivity:	Human, Rat
Host:	Goat
Clonality:	Polyclonal
Conjugate:	This CYP24A1 antibody is un-conjugated
Application:	Western Blotting (WB), ELISA, Immunohistochemistry (IHC)

Product Details

Purpose:	CYP24A1
Immunogen:	C-RKYDIQATDN
Sequence:	RKYDIQATDN
Isotype:	IgG
Specificity:	This antibody is expected to recognize both reported isoforms (NP_000773.2, NP_001122387.1).
Cross-Reactivity:	Human
Purification:	Purified from goat serum by ammonium sulphate precipitation followed by antigen affinity chromatography using the immunizing peptide.
Grade:	Verified

Target Details

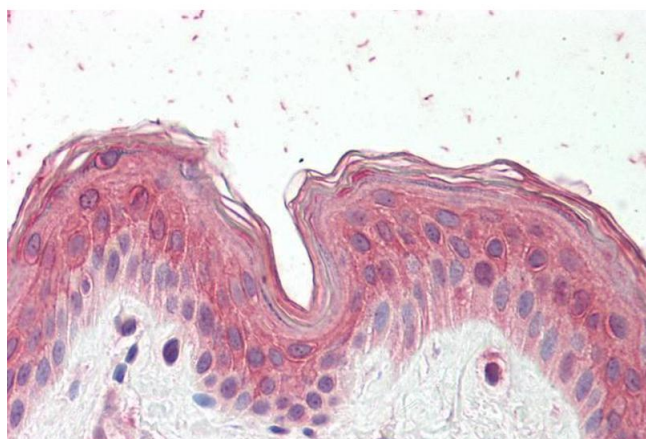
Target:	CYP24A1
Alternative Name:	CYP24A1 (CYP24A1 Products)
Background:	CYP24A1, cytochrome P450, family 24, subfamily A, polypeptide 1, CP24, CYP24, MGC126273, MGC126274, P450-CC24, 1,25-dihydroxyvitamin D3 24-hydroxylase, 24-OHase, cytochrome P450 family 24 subfamily A polypeptide 1, cytochrome P450, subfamily XXIV (vitami
Gene ID:	1591
NCBI Accession:	NP_000773 , NP_001122387
Pathways:	Metabolism of Steroid Hormones and Vitamin D

Application Details

Application Notes:	Immunohistochemistry: Paraffin embedded Human Skin. Recommended concentration: 3.75 µg/mL. Western Blot: Approx 50 kDa band observed in Human and Rat Liver lysates (calculated MW of 51.2 kDa according to NP_001122387.1). Recommended concentration: 0.1-0.3 µg/mL. Primary incubation was 1 hour. Peptide ELISA: antibody detection limit dilution 1:32000.
Restrictions:	For Research Use only

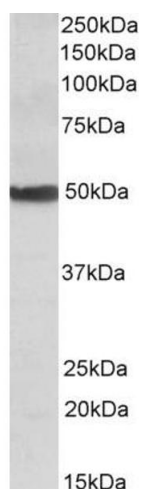
Handling

Format:	Liquid
Concentration:	0.5 mg/mL
Buffer:	Supplied at 0.5 mg/mL in Tris saline, 0.02 % sodium azide, pH 7.3 with 0.5 % bovine serum albumin.
Preservative:	Sodium azide
Precaution of Use:	This product contains Sodium azide: a POISONOUS AND HAZARDOUS SUBSTANCE which should be handled by trained staff only.
Handling Advice:	Minimize freezing and thawing.
Storage:	-20 °C
Storage Comment:	Aliquot and store at -20°C, with minimal freeze/thawing. A working aliquot may be refrigerated at 4°C for a few weeks and still remain viable.



Immunohistochemistry

Image 1. ABIN571265 (3.75µg/ml) staining of paraffin embedded Human Skin. Steamed antigen retrieval with citrate buffer pH 6, AP-staining.



Western Blotting

Image 2. ABIN571265 (0.1µg/ml) staining of Human Liver lysate (35µg protein in RIPA buffer). Detected by chemiluminescence.