

Datasheet for ABIN5712654

**CCL7 Protein (AA 28-97, partial) (His tag)**[Go to Product page](#)**1** Image

## Overview

Quantity:	100 µg
Target:	CCL7
Protein Characteristics:	partial, AA 28-97
Origin:	Mouse
Source:	Escherichia coli (E. coli)
Protein Type:	Recombinant
Purification tag / Conjugate:	This CCL7 protein is labelled with His tag.
Application:	SDS-PAGE (SDS)

## Product Details

Sequence:	PNASTCCYVK KQKIPKRNLIK SYRRITSSRC PWEAVIFKTK KGMEVCAEAH QKWVEEAIAY LDMKTPTPKP
Purification:	SDS-PAGE
Purity:	> 90 %

## Target Details

Target:	CCL7
Alternative Name:	CCL7 ( <a href="#">CCL7 Products</a> )
Background:	Chotactic factor that attracts monocytes and eosinophils, but not neutrophils. Augments monocyte anti-tumor activity .

## Target Details

Molecular Weight: 12.2 kDa

UniProt: [Q03366](#)

## Application Details

Application Notes: Optimal working dilution should be determined by the investigator.

Restrictions: For Research Use only

## Handling

Format: Liquid

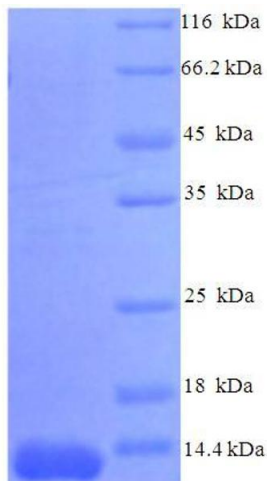
Concentration: 0.1-2 mg/mL

Buffer: 20 mM Tris-HCl based buffer, pH 8.0

Storage: -80 °C, 4 °C, -20 °C

Storage Comment: Store at -20°C, for extended storage, conserve at -20°C or -80°C. Repeated freezing and thawing is not recommended. Store working aliquots at 4°C for up to one week.

## Images



### SDS-PAGE

#### Image 1.