

Datasheet for ABIN571267  
**anti-PCBP1 antibody (AA 223-234)**

## 2 Images

[Go to Product page](#)

## Overview

Quantity:	100 µg
Target:	PCBP1
Binding Specificity:	AA 223-234
Reactivity:	Human, Rat
Host:	Goat
Clonality:	Polyclonal
Conjugate:	This PCBP1 antibody is un-conjugated
Application:	Western Blotting (WB), ELISA

## Product Details

Purpose:	PCBP1 (aa223-234)
Immunogen:	C-SIQGQHTISPLD
Sequence:	SIQGQHTISP LD
Isotype:	IgG
Cross-Reactivity:	Dog, Human, Mouse, Rat
Purification:	Purified from goat serum by ammonium sulphate precipitation followed by antigen affinity chromatography using the immunizing peptide.
Grade:	Verified

## Target Details

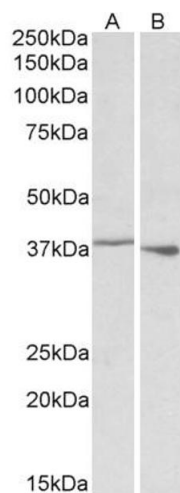
Target:	PCBP1
Alternative Name:	PCBP1 ( <a href="#">PCBP1 Products</a> )
Background:	PCBP1, poly(rC) binding protein 1, HNRPE1, HNRPX, hnRNP-E1, hnRNP-X, alpha-CP1, heterogeneous nuclear ribonucleoprotein E1, heterogenous nuclear ribonucleoprotein E1, heterogenous nuclear ribonucleoprotein X, nucleic acid binding protein sub 2.3
Gene ID:	5093, 23983, 500242
NCBI Accession:	<a href="#">NP_006187</a>

## Application Details

Application Notes:	Western Blot: Approx 38 kDa band observed in Human Peripheral Blood Nucleocytes lysates (calculated MW of 37.5 kDa according to NP_006187.2). The 38 kDa was also observed in Rat Spleen while a 37 kDa band was observed in Rat Thymus. Recommended concentration Peptide ELISA: antibody detection limit dilution 1:8000.
Comment:	<b>Additional validation:</b> This antibody has been successfully used in the following paper: Sikorski et al. (2018) PMID: 30377371.
Restrictions:	For Research Use only

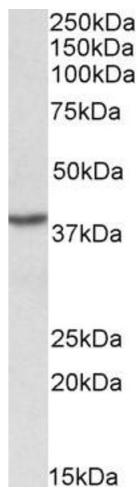
## Handling

Format:	Liquid
Concentration:	0.5 mg/mL
Buffer:	Supplied at 0.5 mg/mL in Tris saline, 0.02 % sodium azide, pH 7.3 with 0.5 % bovine serum albumin.
Preservative:	Sodium azide
Precaution of Use:	This product contains Sodium azide: a POISONOUS AND HAZARDOUS SUBSTANCE which should be handled by trained staff only.
Handling Advice:	Minimize freezing and thawing.
Storage:	-20 °C
Storage Comment:	Aliquot and store at -20°C, with minimal freeze/thawing. A working aliquot may be refrigerated at 4°C for a few weeks and still remain viable.



Western Blotting

**Image 1.** ABIN571267 (0.1µg/ml) staining of Rat Spleen (A) and Thymus (B) lysate (35µg protein in RIPA buffer). Primary incubation was 1 hour. Detected by chemiluminescence.



Western Blotting

**Image 2.** ABIN571267 (0.1µg/ml) staining of PBMC lysate (35µg protein in RIPA buffer). Primary incubation was 1 hour. Detected by chemiluminescence.