

Datasheet for ABIN5712744
GOLM1 Protein (AA 36-401, partial)



[Go to Product page](#)

1 Image

Overview

Quantity:	100 µg
Target:	GOLM1
Protein Characteristics:	partial, AA 36-401
Origin:	Human
Source:	Escherichia coli (E. coli)
Protein Type:	Recombinant
Application:	SDS-PAGE (SDS)

Product Details

Sequence:	SSRSVDLQTR IMELEGRVRR AAAERGAVEL KKNEFQGELE KQREQLDKIQ SSHNFQLESV NKLYQDEKAV LVNNITTGER LIRVLQDQLK TLQRNYGRLQ QDVLQFQKNQ TNLERKFSYD LSQCINQMKE VKEQCEERIE EVTKKGNEAV ASRDLSNND QRQQLQALSE PQPRLQAAGL PHTEVPQGKG NVLGNSSQT PAPSSEVLD SKRQVEKEET NEIQVNNEEP QRDRLPQEPG REQVVEDRPV GGRGFGGAGE LGQTPQVQAA LSVSQENPEM EGPERDQLVI PDGQEEEQEA AGEGRNQQKL RGEDDYNMDE NEASETDKQ AALAGNDRNI DVFNVEDQKR DTINLLDQRE KRNHTL
Purification:	SDS-PAGE
Purity:	> 90 %

Target Details

Target:	GOLM1
---------	-------

Target Details

Alternative Name:	GOLM1 (GOLM1 Products)
Background:	Unknown. Cellular response protein to viral infection.
Molecular Weight:	41.6 kDa
UniProt:	Q8NBJ4

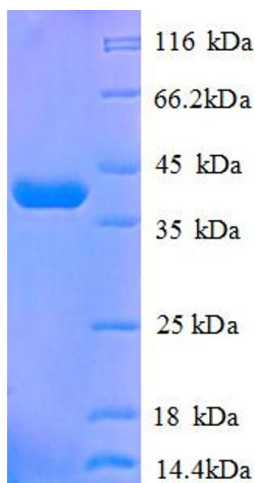
Application Details

Application Notes:	Optimal working dilution should be determined by the investigator.
Restrictions:	For Research Use only

Handling

Format:	Liquid
Concentration:	0.1-2 mg/mL
Buffer:	20 mM Tris-HCl based buffer, pH 8.0
Storage:	-80 °C, 4 °C, -20 °C
Storage Comment:	Store at -20°C, for extended storage, conserve at -20°C or -80°C. Repeated freezing and thawing is not recommended. Store working aliquots at 4°C for up to one week.

Images



SDS-PAGE

Image 1.