

Datasheet for ABIN571275
anti-IDH2 antibody (Internal Region)

3 Images

[Go to Product page](#)

Overview

Quantity:	100 µg
Target:	IDH2
Binding Specificity:	Internal Region
Reactivity:	Human, Mouse, Rat, Pig
Host:	Goat
Clonality:	Polyclonal
Conjugate:	This IDH2 antibody is un-conjugated
Application:	Western Blotting (WB), ELISA, Immunohistochemistry (IHC)

Product Details

Purpose:	IDH2
Immunogen:	CIHGLSNVKLNE
Sequence:	CIHGLSNVKL NE
Isotype:	IgG
Cross-Reactivity:	Cow, Dog, Human, Mouse, Pig, Rat
Purification:	Purified from goat serum by ammonium sulphate precipitation followed by antigen affinity chromatography using the immunizing peptide.
Grade:	Verified

Target Details

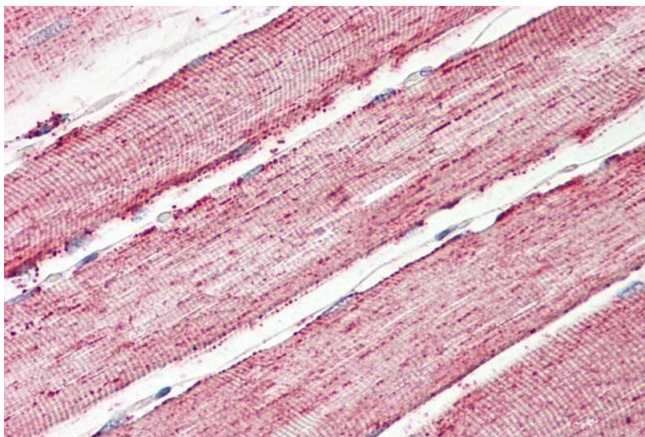
Target:	IDH2
Alternative Name:	IDH2 (IDH2 Products)
Background:	IDH2, isocitrate dehydrogenase 2 (NADP+), mitochondrial, ICD-M, IDH, IDHM, IDP, IDPM, mNADP-IDH, NADP+-specific ICDH, isocitrate dehydrogenase, mitochondrial, oxalosuccinate decarboxylase
Gene ID:	3418, 269951, 361596
NCBI Accession:	NP_002159
Pathways:	Warburg Effect

Application Details

Application Notes:	Immunohistochemistry: Paraffin embedded Human Skeletal Muscle. Recommended concentration: 3.75 µg/mL. Western Blot: Approx 48 kDa band observed in Mouse, Rat and Pig Heart lysates (calculated MW of 50.9 kDa according to Mouse NP_766599.2). Recommended concentration: 0.1-0.3 µg/mL. Primary incubation was 1 hour. Peptide ELISA: antibody detection limit dilution 1:16000.
Restrictions:	For Research Use only

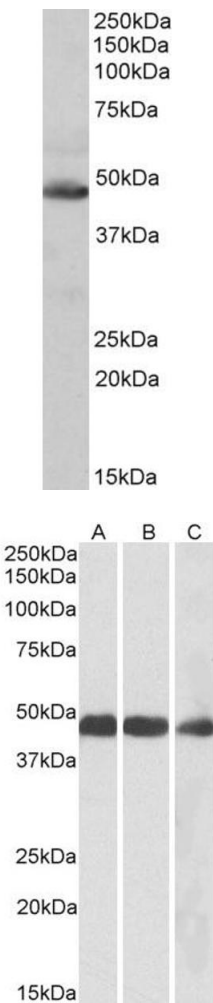
Handling

Format:	Liquid
Concentration:	0.5 mg/mL
Buffer:	Supplied at 0.5 mg/mL in Tris saline, 0.02 % sodium azide, pH 7.3 with 0.5 % bovine serum albumin.
Preservative:	Sodium azide
Precaution of Use:	This product contains Sodium azide: a POISONOUS AND HAZARDOUS SUBSTANCE which should be handled by trained staff only.
Handling Advice:	Minimize freezing and thawing.
Storage:	-20 °C
Storage Comment:	Aliquot and store at -20°C, with minimal freeze/thawing. A working aliquot may be refrigerated at 4°C for a few weeks and still remain viable.



Immunohistochemistry

Image 1. ABIN571275 (3.75µg/ml) staining of paraffin embedded Human Skeletal Muscle. Steamed antigen retrieval with citrate buffer pH 6, AP-staining.



Western Blotting

Image 2. ABIN571275 (0.1µg/ml) staining of Human Heart lysate (35µg protein in RIPA buffer). Detected by chemiluminescence.

Western Blotting

Image 3. ABIN571275 (0.1µg/ml) staining of Mouse (A), Rat (B) and Pig (C) Heart lysates (35µg protein in RIPA buffer). Detected by chemiluminescence.