

Datasheet for ABIN571279

**anti-GPM6A antibody (Internal Region)**

3 Images

[Go to Product page](#)

## Overview

Quantity:	100 µg
Target:	GPM6A
Binding Specificity:	Internal Region
Reactivity:	Human, Mouse, Rat
Host:	Goat
Clonality:	Polyclonal
Conjugate:	This GPM6A antibody is un-conjugated
Application:	Western Blotting (WB), ELISA, Immunohistochemistry (IHC)

## Product Details

Purpose:	GPM6A
Immunogen:	C-QTYFEMARTAGD
Sequence:	QTYFEMARTA GD
Isotype:	IgG
Specificity:	This antibody is expected to recognize all reported isoforms (NP_005268.1, NP_963885.1, NP_963886.1). Reported variants represent identical protein: NP_963885.1, NP_005268.1.
Cross-Reactivity:	Dog, Human, Mouse, Rat
Purification:	Purified from goat serum by ammonium sulphate precipitation followed by antigen affinity chromatography using the immunizing peptide.
Grade:	Verified

## Target Details

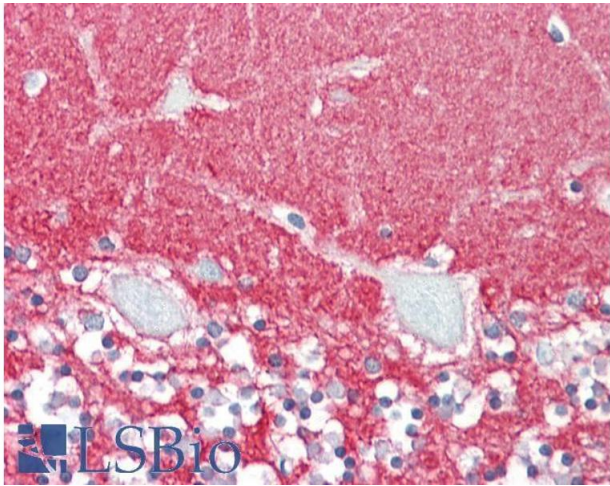
Target:	GPM6A
Alternative Name:	GPM6A ( <a href="#">GPM6A Products</a> )
Background:	GPM6A, glycoprotein M6A, GPM6, M6A, neuronal membrane glycoprotein M6-a
Gene ID:	2823, 234267, 306439
NCBI Accession:	<a href="#">NP_005268</a> , <a href="#">NP_963885</a> , <a href="#">NP_963886</a>

## Application Details

Application Notes:	Immunohistochemistry: Paraffin embedded Human Brain (Cerebellum). Recommended concentration: 3.75 µg/mL.  Western Blot: Approx 33 kDa band observed in Human Brain (Cerebellum) and Rat Brain lysates. An approx. 75 kDa band was also observed in Human Cerebellum, Olfactory Bulb and in fetal Mouse and Rat Brain lysates (calculated MW of 31.2 kDa according to Human Peptide ELISA: antibody detection limit dilution 1:32000.
Comment:	This product has been demonstrated not suitable in IF.
Restrictions:	For Research Use only

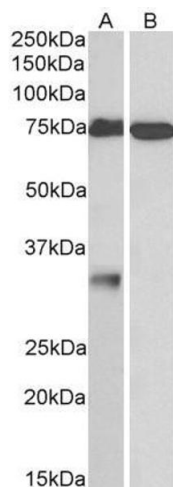
## Handling

Format:	Liquid
Concentration:	0.5 mg/mL
Buffer:	Supplied at 0.5 mg/mL in Tris saline, 0.02 % sodium azide, pH 7.3 with 0.5 % bovine serum albumin.
Preservative:	Sodium azide
Precaution of Use:	This product contains Sodium azide: a POISONOUS AND HAZARDOUS SUBSTANCE which should be handled by trained staff only.
Handling Advice:	Minimize freezing and thawing.
Storage:	-20 °C
Storage Comment:	Aliquot and store at -20°C, with minimal freeze/thawing. A working aliquot may be refrigerated at 4°C for a few weeks and still remain viable.



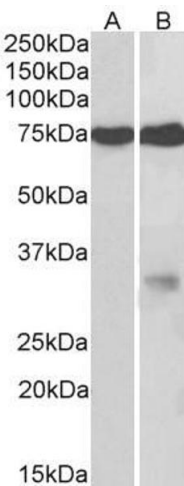
#### Immunohistochemistry

**Image 1.** ABIN571279 (3.75µg/ml) staining of paraffin embedded Human Cerebellum. Steamed antigen retrieval with citrate buffer pH 6, AP-staining.



#### Western Blotting

**Image 2.** ABIN571279 (1µg/ml) staining of Human Cerebellum (A) and Olfactory Bulb (B) lysates (35µg protein in RIPA buffer). Detected by chemiluminescence.



#### Western Blotting

**Image 3.** ABIN571279 (2µg/ml) staining of fetal Mouse (A) and Rat (B) Brain lysates (35µg protein in RIPA buffer). Detected by chemiluminescence.