

Datasheet for ABIN571280

anti-RUFY1 antibody (Internal Region)**2** Images[Go to Product page](#)

Overview

Quantity:	100 µg
Target:	RUFY1
Binding Specificity:	Internal Region
Reactivity:	Human
Host:	Goat
Clonality:	Polyclonal
Conjugate:	This RUFY1 antibody is un-conjugated
Application:	Western Blotting (WB), ELISA, Immunohistochemistry (IHC)

Product Details

Purpose:	RUFY1
Immunogen:	C-QKNEAITSFEGKT
Sequence:	QKNEAITSFE GKT
Isotype:	IgG
Specificity:	This antibody is expected to recognize both reported isoforms (NP_079434.3, NP_001035541.1). Reported variants represent identical protein: NP_001035542.1, NP_001035541.1.
Cross-Reactivity:	Cow, Dog, Human, Mouse, Rat
Purification:	Purified from goat serum by ammonium sulphate precipitation followed by antigen affinity chromatography using the immunizing peptide.

Product Details

Grade: Verified

Target Details

Target: RUFY1

Alternative Name: RUFY1 ([RUFY1 Products](#))

Background: RUFY1, RUN and FYVE domain containing 1, FLJ22251, RABIP4, ZFYVE12, FYVE-finger protein EIP1, OTTHUMP00000223250, RUN and FYVE domain-containing 1, RUN and FYVE domain-containing protein 1, la-binding protein 1, rab4-interacting protein, zinc finger FYVE

Gene ID: 80230, 216724, 360521

NCBI Accession: [NP_079434](#), [NP_001035541](#)

Application Details

Application Notes: Immunohistochemistry: Paraffin embedded Human Small Intestine. Recommended concentration: 5 µg/mL.
Western Blot: Approx 85 kDa band observed in lysates of cell line HeLa (calculated MW of 79.8 kDa according to NP_079434.3). Recommended concentration: 0.05-0.2 µg/mL. Primary incubation was 1 hour.
Peptide ELISA: antibody detection limit dilution 1:32000.

Restrictions: For Research Use only

Handling

Format: Liquid

Concentration: 0.5 mg/mL

Buffer: Supplied at 0.5 mg/mL in Tris saline, 0.02 % sodium azide, pH 7.3 with 0.5 % bovine serum albumin.

Preservative: Sodium azide

Precaution of Use: This product contains Sodium azide: a POISONOUS AND HAZARDOUS SUBSTANCE which should be handled by trained staff only.

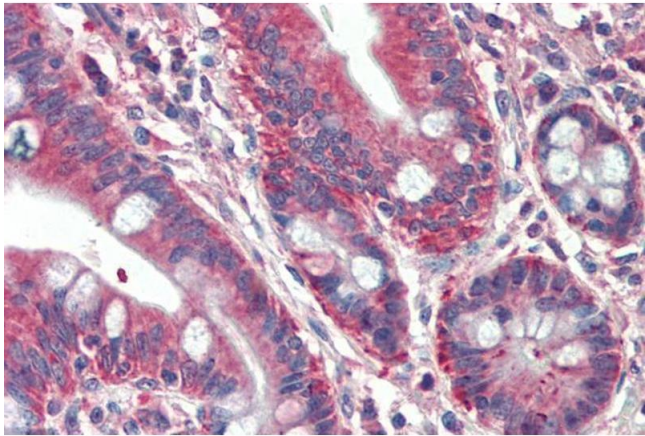
Handling Advice: Minimize freezing and thawing.

Storage: -20 °C

Handling

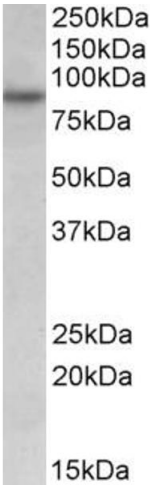
Storage Comment: Aliquot and store at -20°C, with minimal freeze/thawing. A working aliquot may be refrigerated at 4°C for a few weeks and still remain viable.

Images



Immunohistochemistry

Image 1. ABIN571280 (5µg/ml) staining of paraffin embedded Human Small Intestine. Steamed antigen retrieval with citrate buffer Ph 6, AP-staining.



Western Blotting

Image 2. ABIN571280 (0.05µg/ml) staining of HeLa lysate (35µg protein in RIPA buffer). Detected by chemiluminescence.