



[Go to Product page](#)

Datasheet for ABIN571286

## anti-POLDIP2 antibody (Internal Region)

### 2 Images

#### Overview

Quantity:	100 µg
Target:	POLDIP2
Binding Specificity:	Internal Region
Reactivity:	Human, Rat, Mouse
Host:	Goat
Clonality:	Polyclonal
Conjugate:	This POLDIP2 antibody is un-conjugated
Application:	Western Blotting (WB), ELISA

#### Product Details

Purpose:	POLDIP2
Immunogen:	KTHTYYQVLIDARDC
Sequence:	KTHTYYQVLI DARDC
Isotype:	IgG
Cross-Reactivity:	Cow, Dog, Human, Rat
Purification:	Purified from goat serum by ammonium sulphate precipitation followed by antigen affinity chromatography using the immunizing peptide.
Grade:	Verified

## Target Details

---

Target:	POLDIP2
Alternative Name:	POLDIP2 ( <a href="#">POLDIP2 Products</a> )
Background:	POLDIP2, polymerase (DNA-directed), delta interacting protein 2, DKFZp586F1524, PDIP38, POLD4, 38 kDa DNA polymerase delta interaction protein, p38, polymerase delta interacting protein 38, polymerase delta-interacting protein 2
Gene ID:	26073, 67811
NCBI Accession:	<a href="#">NP_056399</a>

## Application Details

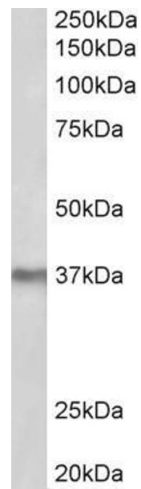
---

Application Notes:	Western Blot: Approx 37 kDa band observed in lysates of cell lines K562 and MCF7 and of Mouse Liver (calculated MW of 42.0 kDa according to NP_056399.1). Approx 37 kDa band observed in Rat Vascular Smooth Muscle Cells lysates. The band diminished upon siRNA k Peptide ELISA: antibody detection limit dilution 1:8000.
Restrictions:	For Research Use only

## Handling

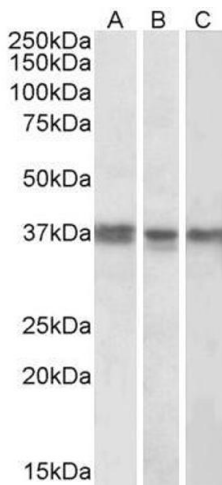
---

Format:	Liquid
Concentration:	0.5 mg/mL
Buffer:	Supplied at 0.5 mg/mL in Tris saline, 0.02 % sodium azide, pH 7.3 with 0.5 % bovine serum albumin.
Preservative:	Sodium azide
Precaution of Use:	This product contains Sodium azide: a POISONOUS AND HAZARDOUS SUBSTANCE which should be handled by trained staff only.
Handling Advice:	Minimize freezing and thawing.
Storage:	-20 °C
Storage Comment:	Aliquot and store at -20°C, with minimal freeze/thawing. A working aliquot may be refrigerated at 4°C for a few weeks and still remain viable.



### Western Blotting

**Image 1.** ABIN571286 (2µg/ml) staining of Mouse Liver lysate (35µg protein in RIPA buffer). Primary incubation was overnight at 4C. Detected by chemiluminescence.



### Western Blotting

**Image 2.** ABIN571286 (1µg/ml) staining of K562 (A), MCF7 (B) and Mouse Liver (C) lysates (35µg protein in RIPA buffer). Primary incubation was overnight at 4°C. Detected by chemiluminescence.