



Datasheet for ABIN571289
anti-DENND4C antibody (Internal Region)



[Go to Product page](#)

1 Image

Overview

Quantity:	100 µg
Target:	DENND4C
Binding Specificity:	Internal Region
Reactivity:	Mouse
Host:	Goat
Clonality:	Polyclonal
Conjugate:	This DENND4C antibody is un-conjugated
Application:	Western Blotting (WB), ELISA

Product Details

Purpose:	Dennd4c
Immunogen:	C-RFKPQSPYRAYKDRS
Sequence:	RFKPQSPYRA YKDRS
Isotype:	IgG
Specificity:	This antibody is expected to recognize both reported isoforms (NP_908976.1, NP_001074483.1).
Cross-Reactivity:	Mouse
Purification:	Purified from goat serum by ammonium sulphate precipitation followed by antigen affinity chromatography using the immunizing peptide.
Grade:	Verified

Target Details

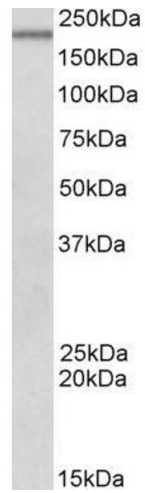
Target:	DENND4C
Alternative Name:	Dennd4c (DENND4C Products)
Background:	Dennd4c, DENN/MADD domain containing 4C, 1700065A05Rik, AA420392, DENN domain-containing protein 4C, likely ortholog of H. sapiens chromosome 9 open reading frame 55 (C9orf55)
Gene ID:	329877
NCBI Accession:	NP_908976 , NP_001074483

Application Details

Application Notes:	Western Blot: Approx 210 kDa band observed in Mouse Spleen lysates (calculated MW of 211 kDa according to NP_908976.1). Recommended concentration: 0.5-2 µg/mL. Peptide ELISA: antibody detection limit dilution 1:8000.
Restrictions:	For Research Use only

Handling

Format:	Liquid
Concentration:	0.5 mg/mL
Buffer:	Supplied at 0.5 mg/mL in Tris saline, 0.02 % sodium azide, pH 7.3 with 0.5 % bovine serum albumin.
Preservative:	Sodium azide
Precaution of Use:	This product contains Sodium azide: a POISONOUS AND HAZARDOUS SUBSTANCE which should be handled by trained staff only.
Handling Advice:	Minimize freezing and thawing.
Storage:	-20 °C
Storage Comment:	Aliquot and store at -20°C, with minimal freeze/thawing. A working aliquot may be refrigerated at 4°C for a few weeks and still remain viable.



Western Blotting

Image 1. ABIN571289 (0.5 μ g/ml) staining of Mouse Spleen lysate (35 μ g protein in RIPA buffer). Primary incubation was 1 hour. Detected by chemiluminescence.