

Datasheet for ABIN5713124

## Connexin 43/GJA1 Protein (AA 233-382, Cytoplasmic Domain, Cytosolic) (His tag)



[Go to Product page](#)

### 1 Image

#### Overview

Quantity:	100 µg
Target:	Connexin 43/GJA1 (GJA1)
Protein Characteristics:	AA 233-382, Cytosolic, Cytoplasmic Domain
Origin:	Human
Source:	Escherichia coli (E. coli)
Protein Type:	Recombinant
Purification tag / Conjugate:	This Connexin 43/GJA1 protein is labelled with His tag.
Application:	SDS-PAGE (SDS)

#### Product Details

Sequence:	FKGVKDRVKG KSDPYHATSG ALSPAKDCGS QKYAYFNGCS SPTAPLSPMS PPGYKLVTDG RNNSSCRNYN KQASEQNWAN YSAEQNRMGQ AGSTISNSHA QPFDFPDDNQ NSKKLAAGHE LQPLAIVDQR PSSRASSRAS SRPRPDDLEI
Purification:	SDS-PAGE
Purity:	> 90 %

#### Target Details

Target:	Connexin 43/GJA1 (GJA1)
Alternative Name:	Gap Junction alpha-1 ( <a href="#">GJA1 Products</a> )
Molecular Weight:	20.4 kDa

## Target Details

UniProt: [P17302](#)

Pathways: [MAPK Signaling, Myometrial Relaxation and Contraction, Cell-Cell Junction Organization](#)

## Application Details

Application Notes: Optimal working dilution should be determined by the investigator.

Restrictions: For Research Use only

## Handling

Format: Liquid

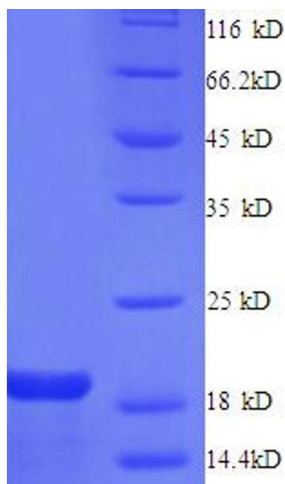
Concentration: 0.1-2 mg/mL

Buffer: 20 mM Tris-HCl based buffer, pH 8.0

Storage: -80 °C, 4 °C, -20 °C

Storage Comment: Store at -20°C, for extended storage, conserve at -20°C or -80°C. Repeated freezing and thawing is not recommended. Store working aliquots at 4°C for up to one week.

## Images



### SDS-PAGE

Image 1.