



[Go to Product page](#)

Datasheet for ABIN5713138

## TREH Protein (AA 3-221, partial) (His tag)

### 1 Image

#### Overview

Quantity:	100 µg
Target:	TREH
Protein Characteristics:	AA 3-221, partial
Origin:	Saccharomyces cerevisiae
Source:	Escherichia coli (E. coli)
Protein Type:	Recombinant
Purification tag / Conjugate:	This TREH protein is labelled with His tag.
Application:	SDS-PAGE (SDS)

#### Product Details

Sequence:	QVNTSQGPVA QGRQRRLSSL SEFNDFPSNA EVYYPPTDP RKQKQAKPAK INRTRTMSVF DNVSPFKKTG FGKLQQTTRG SEDDTYSSSQ GNRRFFIEDV DKTLNELLA EDTKNYQIT IEDTGPKVLK VGTANSYGYK HINIRGTYML SNLLQELTIA KSFGRHQIFL DEARINENPV NRLSRLINTQ FWNSLTRRVD LNNVGEIAKD TKIDTPGAK
Purification:	SDS-PAGE
Purity:	> 90 %

#### Target Details

Target:	TREH
Alternative Name:	TREA ( <a href="#">TREH Products</a> )
Molecular Weight:	28.9 kDa

## Target Details

UniProt: [P32356](#)

## Application Details

Application Notes: Optimal working dilution should be determined by the investigator.

Restrictions: For Research Use only

## Handling

Format: Liquid

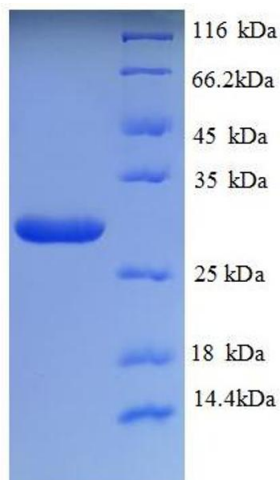
Concentration: 0.1-2 mg/mL

Buffer: 20 mM Tris-HCl based buffer, pH 8.0

Storage: -80 °C, 4 °C, -20 °C

Storage Comment: Store at -20°C, for extended storage, conserve at -20°C or -80°C. Repeated freezing and thawing is not recommended. Store working aliquots at 4°C for up to one week.

## Images



### SDS-PAGE

Image 1.