



Datasheet for ABIN5713168

Glycerol Kinase Protein (GK) (AA 2-502) (His tag)



[Go to Product page](#)

1 Image

Overview

Quantity:	100 µg
Target:	Glycerol Kinase (GK)
Protein Characteristics:	AA 2-502
Origin:	E. coli
Source:	Escherichia coli (E. coli)
Protein Type:	Recombinant
Purification tag / Conjugate:	This Glycerol Kinase protein is labelled with His tag.
Application:	SDS-PAGE (SDS)

Product Details

Sequence:	TEKKYIVALD QGTTSSRAVV MDHDANIISV SQREFEQIYP KPGWVEHDPM EIWATQSSTL VEVLAKADIS SDQIAAIGIT NQRETTIVWE KETGKPIYNA IVWQCRRTAE ICEHLKRDGL EDYIRSNTGL VIDPYFSGTK VKWILDHVEG SRERARRGEL LFGTVDTWLI WKMTQGRVHV TDYTNASRTM LFNHITLDWD DKMLEVLDP REMLPEVRRS SEVYGQTNIG GKGGTRIPIS GIAGDQQAAL FGQLCVKEGM AKNTYGTGCF MLMNTGEKAV KSENGLLTTI ACGPTGEVNY ALEGAVFMAG ASIQWLRDEM KLINDAYDSE YFATKVQNTN GVVVPAFTG LGAPYWDPYA RGAIFGLTRG VNANHIIRAT LESIAYQTRD VLEAMQADSG IRLHALRVDG GAVANNFLMQ FQSDILGTRV ERPEVREVT A LGAAYLAGLA VGFWQNLDEL QEKAVIEREF RPIGETTERN YRYAGWKKAV KRAMAWEEHD E
Purification:	SDS-PAGE
Purity:	> 90 %

Target Details

Target:	Glycerol Kinase (GK)
Alternative Name:	GLPK (GK Products)
Background:	Key enzyme in the regulation of glycerol uptake and metabolism. Catalyzes the phosphorylation of glycerol to yield sn-glycerol 3-phosphate. It also catalyzes the phosphorylation of dihydroxyacetone, L-glyceraldehyde and D-glyceraldehyde. It uses only ATP.
Molecular Weight:	60.2 kDa
UniProt:	P0A6F3

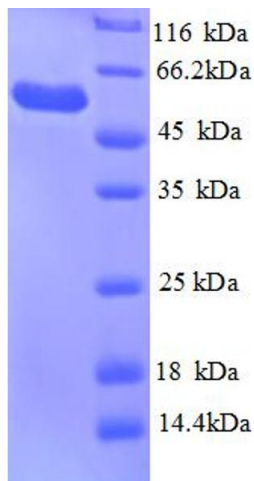
Application Details

Application Notes:	Optimal working dilution should be determined by the investigator.
Restrictions:	For Research Use only

Handling

Format:	Liquid
Concentration:	0.1-2 mg/mL
Buffer:	20 mM Tris-HCl based buffer, pH 8.0
Storage:	-80 °C, 4 °C, -20 °C
Storage Comment:	Store at -20°C, for extended storage, conserve at -20°C or -80°C. Repeated freezing and thawing is not recommended. Store working aliquots at 4°C for up to one week.

Images



SDS-PAGE

Image 1.