



[Go to Product page](#)

Datasheet for ABIN5713220

AMH Protein (AA 450-552) (His tag)

1 Image

Overview

Quantity:	100 µg
Target:	AMH
Protein Characteristics:	AA 450-552
Origin:	Mouse
Source:	Yeast
Protein Type:	Recombinant
Purification tag / Conjugate:	This AMH protein is labelled with His tag.
Application:	SDS-PAGE (SDS)

Product Details

Sequence:	DKGQDGPCAL RELSVDLRAE RSVLIPETYQ ANNCQGACRW PQSDRNPRYG NHVLLLLKMQ ARGAALGRLP CCVPTAYAGK LLISLSEERI SADHVPNMVA TEC
Purification:	SDS-PAGE
Purity:	> 90 %

Target Details

Target:	AMH
Alternative Name:	MIS (AMH Products)
Background:	This glycoprotein, produced by the Sertoli cells of the testis, causes regression of the Muellierian duct. It is also able to inhibit the growth of tumors derived from tissues of Muellierian duct origin.

Target Details

Molecular Weight:	13 kDa
UniProt:	P27106
Pathways:	Negative Regulation of Hormone Secretion

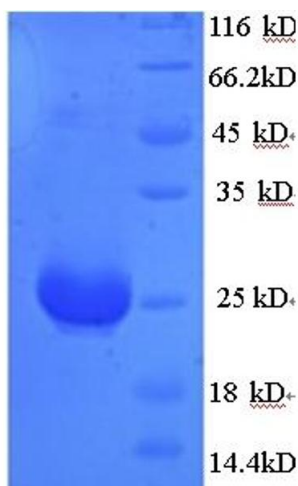
Application Details

Application Notes:	Optimal working dilution should be determined by the investigator.
Restrictions:	For Research Use only

Handling

Format:	Liquid
Concentration:	0.1-2 mg/mL
Buffer:	20 mM Tris-HCl based buffer, pH 8.0
Storage:	-80 °C, 4 °C, -20 °C
Storage Comment:	Store at -20°C, for extended storage, conserve at -20°C or -80°C. Repeated freezing and thawing is not recommended. Store working aliquots at 4°C for up to one week.

Images



SDS-PAGE

Image 1.