



[Go to Product page](#)

Datasheet for ABIN5713332

CD300LB Protein (AA 18-151) (His tag)

1 Image

Overview

Quantity:	100 µg
Target:	CD300LB (TREM5)
Protein Characteristics:	AA 18-151
Origin:	Human
Source:	Yeast
Protein Type:	Recombinant
Purification tag / Conjugate:	This CD300LB protein is labelled with His tag.
Application:	SDS-PAGE (SDS)

Product Details

Sequence:	GICICHWLQI RRTRSREGRA MWLPPALLLL SLSGCFSIQG PESVRAPEQG SLTVQCHYKQ GWETYIKWWC RGVRWDTCKI LIETRGSSEQ EKSDRVSIKD NQKDRFTFTV MEGLRRDDAD VYWCGIERRG PDLG
Purification:	SDS-PAGE
Purity:	> 90 %

Target Details

Target:	CD300LB (TREM5)
Alternative Name:	CLM7 (TREM5 Products)
Molecular Weight:	17.53 kDa

Target Details

UniProt: [A8K4G0](#)

Application Details

Application Notes: Optimal working dilution should be determined by the investigator.

Restrictions: For Research Use only

Handling

Format: Liquid

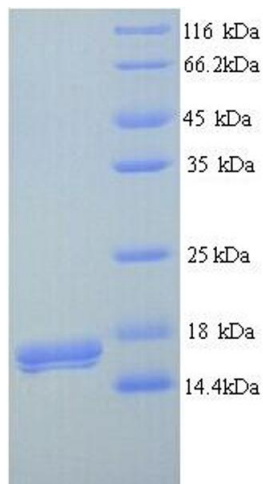
Concentration: 0.1-2 mg/mL

Buffer: 20 mM Tris-HCl based buffer, pH 8.0

Storage: -80 °C, 4 °C, -20 °C

Storage Comment: Store at -20°C, for extended storage, conserve at -20°C or -80°C. Repeated freezing and thawing is not recommended. Store working aliquots at 4°C for up to one week.

Images



SDS-PAGE

Image 1.