



[Go to Product page](#)

Datasheet for ABIN5713350

CEL2A Protein (AA 31-271) (His tag)

1 Image

Overview

Quantity:	100 µg
Target:	CEL2A
Protein Characteristics:	AA 31-271
Origin:	Mouse
Source:	Yeast
Protein Type:	Recombinant
Purification tag / Conjugate:	This CEL2A protein is labelled with His tag.
Application:	SDS-PAGE (SDS)

Product Details

Sequence:	VVGGQEATPN TWPWQVSLQV LSSGRWRHNC GGSLVANNWV LTAAHCLSNY QTYRVLLGAH SLSNPGAGSA AVQVSKLVVH QRWNSQNVGN GYDIALIKLA SPVTLSKNIQ TACLPPAGTI LPRNYVCYVT GWLLQTNGN SPDTLRQGR LVDYATCSS ASWWGSSVKS SMVCAGGDGV TSSCNGDSSG PLNCRASNGQ WQVHGIVSFG SSLGCNYPRK PSVFTRVSNY IDWINSVMAR N
Purification:	SDS-PAGE
Purity:	> 90 %

Target Details

Target:	CEL2A
Alternative Name:	CEL2A (CEL2A Products)
Molecular Weight:	27.69 kDa

Target Details

UniProt: [P05208](#)

Application Details

Application Notes: Optimal working dilution should be determined by the investigator.

Restrictions: For Research Use only

Handling

Format: Liquid

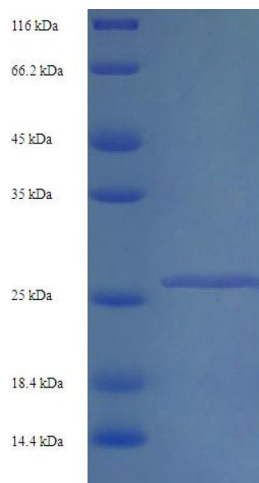
Concentration: 0.1-2 mg/mL

Buffer: 20 mM Tris-HCl based buffer, pH 8.0

Storage: -80 °C, 4 °C, -20 °C

Storage Comment: Store at -20°C, for extended storage, conserve at -20°C or -80°C. Repeated freezing and thawing is not recommended. Store working aliquots at 4°C for up to one week.

Images



SDS-PAGE

Image 1.