



[Go to Product page](#)

Datasheet for ABIN5713354

## Chromogranin A Protein (CHGA) (AA 19-457) (His tag)

### 1 Image

#### Overview

Quantity:	100 µg
Target:	Chromogranin A (CHGA)
Protein Characteristics:	AA 19-457
Origin:	Human
Source:	Yeast
Protein Type:	Recombinant
Purification tag / Conjugate:	This Chromogranin A protein is labelled with His tag.
Application:	SDS-PAGE (SDS)

#### Product Details

Sequence:	<p>LPVNSPMNKG DTEVMKCIVE VISDTLSKPS PMPVSQECFE TLRGDERILS ILRHQNLKKE                      LQDLALQGAK ERAHQKQKHS GFEDELSEVL ENQSSQAEK EAVEEPSSKD VMEKREDSKE                      AEKSGEATDG ARPQALPEPM QESKAEGNNQ APGEEEEEEE EATNTHPPAS LPSQKYPGPQ                      AEGDSEGLSQ GLVDREKGLS AEPGWQAKRE EEEEEEEAE AGEEAVPEEE GPTVVLNPHP                      SLGYKEIRKG ESRSEALAVD GAGKPGAEAA QDPEGKGEQE HSQQKEEEEE MAVVPQGLFR                      GGKSGELEQE EERLSKEWED SKRWSKMDQL AKELTAEKRL EGQEEEDNR DSSMKLSFRA                      RAYGFRGPGP QLRRGWRPSS REDSLEAGLP LQVRGYPEEK KEEEGSANRR PEDQELESLS                      AIEAELEKVA HQLQALRRG</p>
Purification:	SDS-PAGE
Purity:	> 90 %

## Target Details

---

Target:	Chromogranin A (CHGA)
Alternative Name:	CMGA ( <a href="#">CHGA Products</a> )
Background:	<p>Pancreastatin: Strongly inhibits glucose induced insulin release from the pancreas. Catestatin: Inhibits catecholamine release from chromaffin cells and noradrenergic neurons by acting as a non-competitive nicotinic cholinergic antagonist . Displays antibacterial activity against Gram-positive bacteria <i>S.aureus</i> and <i>M.luteus</i>, and Gram-negative bacteria <i>E.coli</i> and <i>P.aeruginosa</i> . Can induce mast cell migration, degranulation and production of cytokines and chemokines . Acts as a potent scavenger of free radicals in vitro . May play a role in the regulation of cardiac function and blood pressure .</p>
Molecular Weight:	50.9 kDa
UniProt:	<a href="#">P10645</a>
Pathways:	<a href="#">Negative Regulation of Hormone Secretion</a> , <a href="#">cAMP Metabolic Process</a> , <a href="#">Regulation of G-Protein Coupled Receptor Protein Signaling</a>

## Application Details

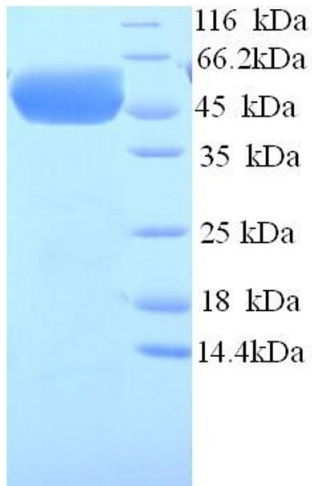
---

Application Notes:	Optimal working dilution should be determined by the investigator.
Restrictions:	For Research Use only

## Handling

---

Format:	Liquid
Concentration:	0.1-2 mg/mL
Buffer:	20 mM Tris-HCl based buffer, pH 8.0
Storage:	-80 °C, 4 °C, -20 °C
Storage Comment:	Store at -20°C, for extended storage, conserve at -20°C or -80°C. Repeated freezing and thawing is not recommended. Store working aliquots at 4°C for up to one week.



**SDS-PAGE**

**Image 1.**