

Datasheet for ABIN5713356

L1CAM Protein (AA 1003-1114, partial) (His tag)[Go to Product page](#)**1** Image

Overview

Quantity:	100 µg
Target:	L1CAM
Protein Characteristics:	AA 1003-1114, partial
Origin:	Human
Source:	Yeast
Protein Type:	Recombinant
Purification tag / Conjugate:	This L1CAM protein is labelled with His tag.
Application:	SDS-PAGE (SDS)

Product Details

Sequence:	EAIVREGGTM ALSGISDFGN ISATAGENYS VVSWVPKEGQ CNFRFHILFK ALGEEKGGAS LSPQYVSYNQ SSYTQWDLQP DTDYEIHLFK ERMFRHQMAV KTNGTGRVRL PP
Purification:	SDS-PAGE
Purity:	> 90 %

Target Details

Target:	L1CAM
Alternative Name:	L1CAM (L1CAM Products)
Background:	Cell adhesion molecule with an important role in the development of the nervous syst. Involved in neuron-neuron adhesion, neurite fasciculation, outgrowth of neurites, etc. Binds to axonin on neurons.

Target Details

Molecular Weight:	14.5 kDa
UniProt:	P32004
Pathways:	Synaptic Membrane

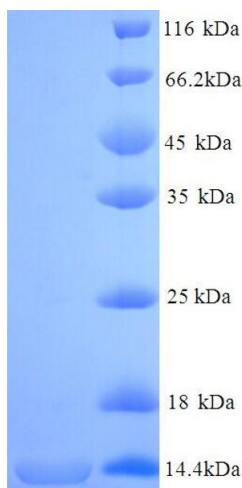
Application Details

Application Notes:	Optimal working dilution should be determined by the investigator.
Restrictions:	For Research Use only

Handling

Format:	Liquid
Concentration:	0.1-2 mg/mL
Buffer:	20 mM Tris-HCl based buffer, pH 8.0
Storage:	-80 °C,4 °C,-20 °C
Storage Comment:	Store at -20°C, for extended storage, conserve at -20°C or -80°C. Repeated freezing and thawing is not recommended. Store working aliquots at 4°C for up to one week.

Images



SDS-PAGE

Image 1.