



[Go to Product page](#)

Datasheet for ABIN5713378

CRHR1 Protein (AA 23-121) (His tag)

1 Image

Overview

Quantity:	100 µg
Target:	CRHR1
Protein Characteristics:	AA 23-121
Origin:	Human
Source:	Yeast
Protein Type:	Recombinant
Purification tag / Conjugate:	This CRHR1 protein is labelled with His tag.
Application:	SDS-PAGE (SDS)

Product Details

Sequence:	MSLQDQHCES LSPASNVSGL QCNASVDLIG TCWPRSPARQ LVVRPCPAFF YGVRYNNTNN GYRECLANGS WAARVNYSEC QEILNEEKKS KVHYHVAVI
Purification:	SDS-PAGE
Purity:	> 90 %

Target Details

Target:	CRHR1
Alternative Name:	CRFR1 (CRHR1 Products)
Background:	G-protein coupled receptor for CRH (corticotropin-releasing factor) and UCN (urocortin). Has high affinity for CRH and UCN. Ligand binding causes a conformation change that triggers signaling via guanine nucleotide-binding proteins (G proteins) and down-stream effectors, such

Target Details

as adenylate cyclase. Promotes the activation of adenylate cyclase, leading to increased intracellular cAMP levels. Inhibits the activity of the calcium channel CACNA1H. Required for normal bryonic development of the adrenal gland and for normal hormonal responses to stress. Plays a role in the response to anxiogenic stimuli.

Molecular Weight: 13.1 kDa

UniProt: [P34998](#)

Pathways: [Hormone Transport](#), [cAMP Metabolic Process](#), [Myometrial Relaxation and Contraction](#), [Regulation of Leukocyte Mediated Immunity](#), [Positive Regulation of Immune Effector Process](#), [Feeding Behaviour](#), [Negative Regulation of Transporter Activity](#)

Application Details

Application Notes: Optimal working dilution should be determined by the investigator.

Restrictions: For Research Use only

Handling

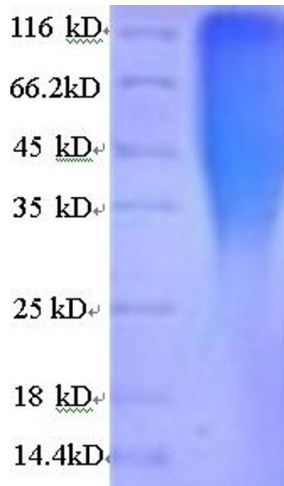
Format: Liquid

Concentration: 0.1-2 mg/mL

Buffer: 20 mM Tris-HCl based buffer, pH 8.0

Storage: -80 °C, 4 °C, -20 °C

Storage Comment: Store at -20°C, for extended storage, conserve at -20°C or -80°C. Repeated freezing and thawing is not recommended. Store working aliquots at 4°C for up to one week.



SDS-PAGE

Image 1.