

Datasheet for ABIN5713448

**FCER1G Protein (AA 45-86, Cytoplasmic Domain, Cytosolic)
(His tag)**[Go to Product page](#)**1** Image

Overview

Quantity:	100 µg
Target:	FCER1G
Protein Characteristics:	Cytosolic, AA 45-86, Cytoplasmic Domain
Origin:	Human
Source:	Yeast
Protein Type:	Recombinant
Purification tag / Conjugate:	This FCER1G protein is labelled with His tag.
Application:	SDS-PAGE (SDS)

Product Details

Sequence:	RLKVIQVRKA AITSYEKSDG VYTGLSTRNQ ETYETLKHEK PPQ
Purification:	SDS-PAGE
Purity:	> 90 %

Target Details

Target:	FCER1G
Alternative Name:	FCERG (FCER1G Products)
Background:	Associates with a variety of FcR alpha chains to form a functional signaling complex. Regulates several aspects of the immune response. The gamma subunit has a critical role in allowing the IgE Fc receptor to reach the cell surface. Also involved in collagen-mediated platelet activation and in neutrophil activation mediated by integrin.

Target Details

Molecular Weight:	7 kDa
UniProt:	P30273
Pathways:	Fc-epsilon Receptor Signaling Pathway , Regulation of Leukocyte Mediated Immunity , Positive Regulation of Immune Effector Process , Production of Molecular Mediator of Immune Response

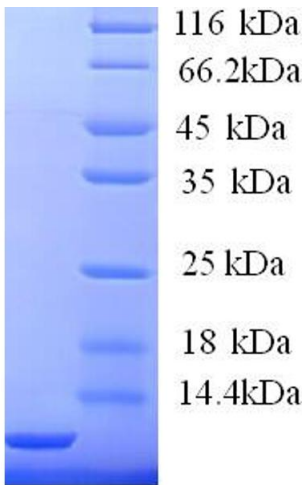
Application Details

Application Notes:	Optimal working dilution should be determined by the investigator.
Restrictions:	For Research Use only

Handling

Format:	Liquid
Concentration:	0.1-2 mg/mL
Buffer:	20 mM Tris-HCl based buffer, pH 8.0
Storage:	-80 °C, 4 °C, -20 °C
Storage Comment:	Store at -20°C, for extended storage, conserve at -20°C or -80°C. Repeated freezing and thawing is not recommended. Store working aliquots at 4°C for up to one week.

Images



SDS-PAGE

Image 1.