

Datasheet for ABIN5713538
IGFBPI Protein (AA 26-272) (His tag)



[Go to Product page](#)

1 Image

Overview

Quantity:	100 µg
Target:	IGFBPI
Protein Characteristics:	AA 26-272
Origin:	Mouse
Source:	Yeast
Protein Type:	Recombinant
Purification tag / Conjugate:	This IGFBPI protein is labelled with His tag.
Application:	SDS-PAGE (SDS)

Product Details

Sequence:	APQPWHCAPC TAERLGLCPP VPASCPEISR PAGCGCCPTC ALPMGAACGV ATARCAQGLS CRALPGERP LHALTRQGA CVPEPAAPAT STLFSSQHEE AKAAVVSADE LSESPEMTEE QLLDSFHLMA PSREDQPILW NAISTYSSMR AREIADLKKW KEPCQRELYK VLERLAAAQQ KAGDEIYKFY LPNCNKNGFY HSKQCETSLD GEAGLCWCVY PWSGKKIPGS LETRGDPNCH QYFNVHN
Purification:	SDS-PAGE
Purity:	> 90 %

Target Details

Target:	IGFBPI
Alternative Name:	IBP1 (IGFBPI Products)

Target Details

Background:	IGF-binding proteins prolong the half-life of the IGFs and have been shown to either inhibit or stimulate the growth promoting effects of the IGFs on cell culture. They alter the interaction of IGFs with their cell surface receptors. Promotes cell migration .
Molecular Weight:	28.85 kDa
UniProt:	P47876
Pathways:	Myometrial Relaxation and Contraction , ER-Nucleus Signaling , Growth Factor Binding

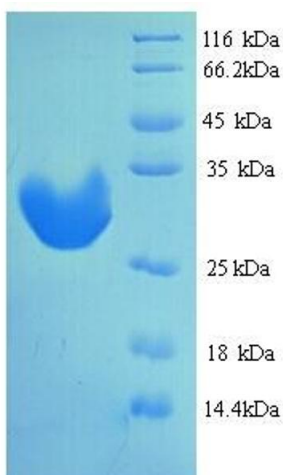
Application Details

Application Notes:	Optimal working dilution should be determined by the investigator.
Restrictions:	For Research Use only

Handling

Format:	Liquid
Concentration:	0.1-2 mg/mL
Buffer:	20 mM Tris-HCl based buffer, pH 8.0
Storage:	-80 °C, 4 °C, -20 °C
Storage Comment:	Store at -20°C, for extended storage, conserve at -20°C or -80°C. Repeated freezing and thawing is not recommended. Store working aliquots at 4°C for up to one week.

Images



SDS-PAGE

Image 1.