



Datasheet for ABIN5713588

KLRG2 Protein (AA 1-409, full length) (His tag)



[Go to Product page](#)

1 Image

Overview

Quantity:	100 µg
Target:	KLRG2
Protein Characteristics:	AA 1-409, full length
Origin:	Human
Source:	Yeast
Protein Type:	Recombinant
Purification tag / Conjugate:	This KLRG2 protein is labelled with His tag.
Application:	SDS-PAGE (SDS)

Product Details

Sequence:	<p>MEESWEAAPG GQAGAELPME PVGSLVPTLE QPQVPAKVRQ PEGPESSPSP AGAVEKAAGA GLEPSSKKKP PSPRPGSPRV PPLSLGYGVC PEPPSPGPAL VKLPRNGEAP GAEPAPSAWA PMELQVDVRV KPVGAAGGSS TSPRPSTRF LKVPVPESPA FSRHADPAHQ LLLRAPSQGG TWGRRSPLAA ARTESGCDAE GRASPAEGSA GSPGSPTCCR CKELGLEKED AALLPRAGLD GDEKLPRAVT LTGLPMYVKS LYWALAFMAV LLAVSGVVIV VLASRAGARC QQCPPGWVLS EEHCYYFSAE AQAWASQAF CSAYHATLPL LSHTQDFLGR YPVSRRHSWVG AWRGPQGWHW IDEAPLPPQL LPEDGEDNLD INCGALEEGT LVAANCSTPR PWVCAKGTQ</p>
Purification:	SDS-PAGE
Purity:	> 90 %

Target Details

Target:	KLRG2
Alternative Name:	KLRG2 (KLRG2 Products)
Molecular Weight:	44.8 kDa
UniProt:	A4D1S0

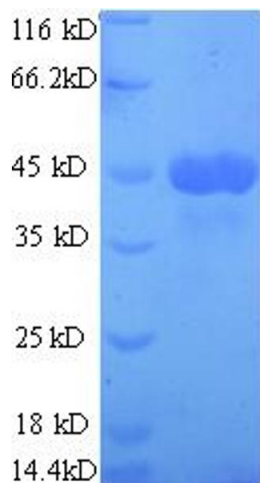
Application Details

Application Notes:	Optimal working dilution should be determined by the investigator.
Restrictions:	For Research Use only

Handling

Format:	Liquid
Concentration:	0.1-2 mg/mL
Buffer:	20 mM Tris-HCl based buffer, pH 8.0
Storage:	-80 °C, 4 °C, -20 °C
Storage Comment:	Store at -20°C, for extended storage, conserve at -20°C or -80°C. Repeated freezing and thawing is not recommended. Store working aliquots at 4°C for up to one week.

Images



SDS-PAGE

Image 1.