

Datasheet for ABIN5713612

**LILRB3 Protein (AA 664-841, Cytoplasmic Domain, Cytosolic)
(His tag)**[Go to Product page](#)**1** Image

Overview

Quantity:	100 µg
Target:	LILRB3
Protein Characteristics:	AA 664-841, Cytosolic, Cytoplasmic Domain
Origin:	Mouse
Source:	Yeast
Protein Type:	Recombinant
Purification tag / Conjugate:	This LILRB3 protein is labelled with His tag.
Application:	SDS-PAGE (SDS)

Product Details

Sequence:	RRRRHRGKFRK DVQKEKDLQL SSGAEEPITR KGELQKRPNP AAATQEEESLY ASVEDMQTED GVELNSWTPP EEDPQGETYA QVKPSRLRKA GHVSPSVMSR EQLNTEYEQA EEGQGANNQA AESGESQDVT YAQLCSRTL R QGAAASPLSQ AGEAPEEPSV YATLAAARPE AVPKDMEQ
Purification:	SDS-PAGE
Purity:	> 90 %

Target Details

Target:	LILRB3
Alternative Name:	LIRB3 (LILRB3 Products)
Background:	May act as receptor for class I MHC antigens. Becomes activated upon coligation of LILRB3 and immune receptors, such as FCGR2B and the B-cell receptor. Down-regulates antigen-

Target Details

induced B-cell activation by recruiting phosphatases to its immunoreceptor tyrosine-based inhibitor motifs (ITIM).

Molecular Weight: 21.6 kDa

UniProt: [P97484](#)

Application Details

Application Notes: Optimal working dilution should be determined by the investigator.

Restrictions: For Research Use only

Handling

Format: Liquid

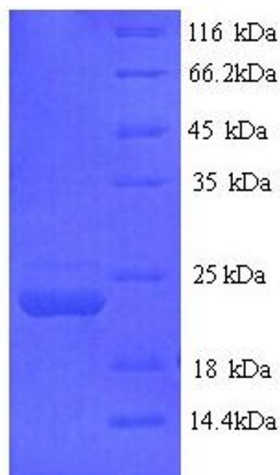
Concentration: 0.1-2 mg/mL

Buffer: 20 mM Tris-HCl based buffer, pH 8.0

Storage: -80 °C, 4 °C, -20 °C

Storage Comment: Store at -20°C, for extended storage, conserve at -20°C or -80°C. Repeated freezing and thawing is not recommended. Store working aliquots at 4°C for up to one week.

Images



SDS-PAGE

Image 1.